



Cairns Road, SW11

£725,000

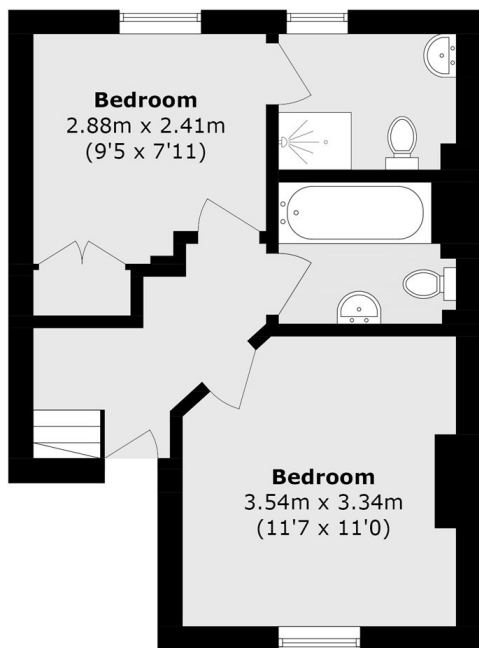
This spectacular split-level apartment on Cairns Road comprises two double bedrooms, an eat-in kitchen, and a reception/dining room with an abundance of natural light, as well as two bathrooms (including an en suite). The property also benefits from loft storage in addition to built-in storage in the bedroom and hallway.

Cairns Road is a sought after residential street located "Between The Commons" off the busy and most vibrant section of Northcote Road, ideal for easy access to both Wandsworth and Clapham Commons as well as Clapham Junction station.

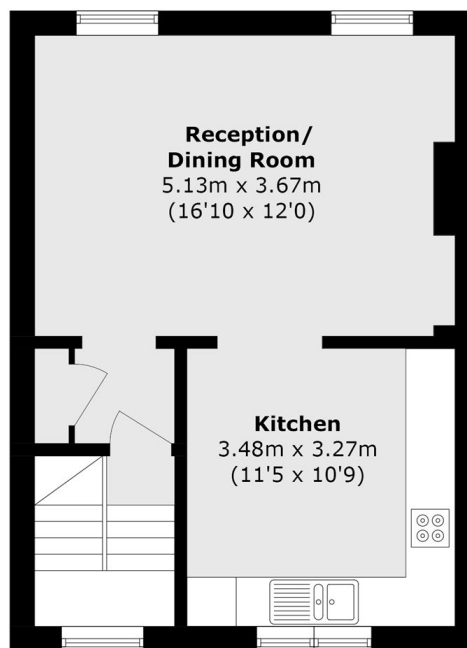
Features

- Split-level
- Two Double Bedrooms
- Reception/Dining Room
- Eat-in Kitchen
- Two Bathrooms
- Between The Commons

Cairns Road, London, SW11



Ground Floor



First Floor

Total Area (approx.): 70.5 sq. m (758.8 sq. ft)