



**Taybridge Road, SW11**

**£1,325,000**

**Dexters**



## Taybridge Road, SW11

An exceptional four double bedroom freehold home measuring just shy of 1,600 Sq Ft on the sought after Taybridge Road. The property comprises a double reception room, eat-in kitchen, four double bedrooms, two bathrooms, & large private garden. The property benefits further from extension potential into the loft and rear/side return (STPP) and is being sold chain free.

Entering on the ground floor, you are welcomed into a bay-fronted reception room to the front, leading through to a separate dining room, creating two well-defined yet connected living spaces ideal for both family life and entertaining. To the rear sits a generous kitchen with ample worktop space and direct access out to the garden. The first floor offers three well-proportioned bedrooms, including a large principal bedroom to the front, alongside a family bathroom. The second floor provides an impressive additional double bedroom with additional bathroom, creating a private top-floor retreat. A useful cellar adds further storage, completing this spacious and well-balanced home arranged over multiple levels.

Taybridge Road is located moments from Clapham Common and the many shops, cafés, gyms and restaurants on Lavender Hill. The fashionable Northcote Road is within a short walk, along with the department stores and excellent transport links of Clapham Junction.

### Features

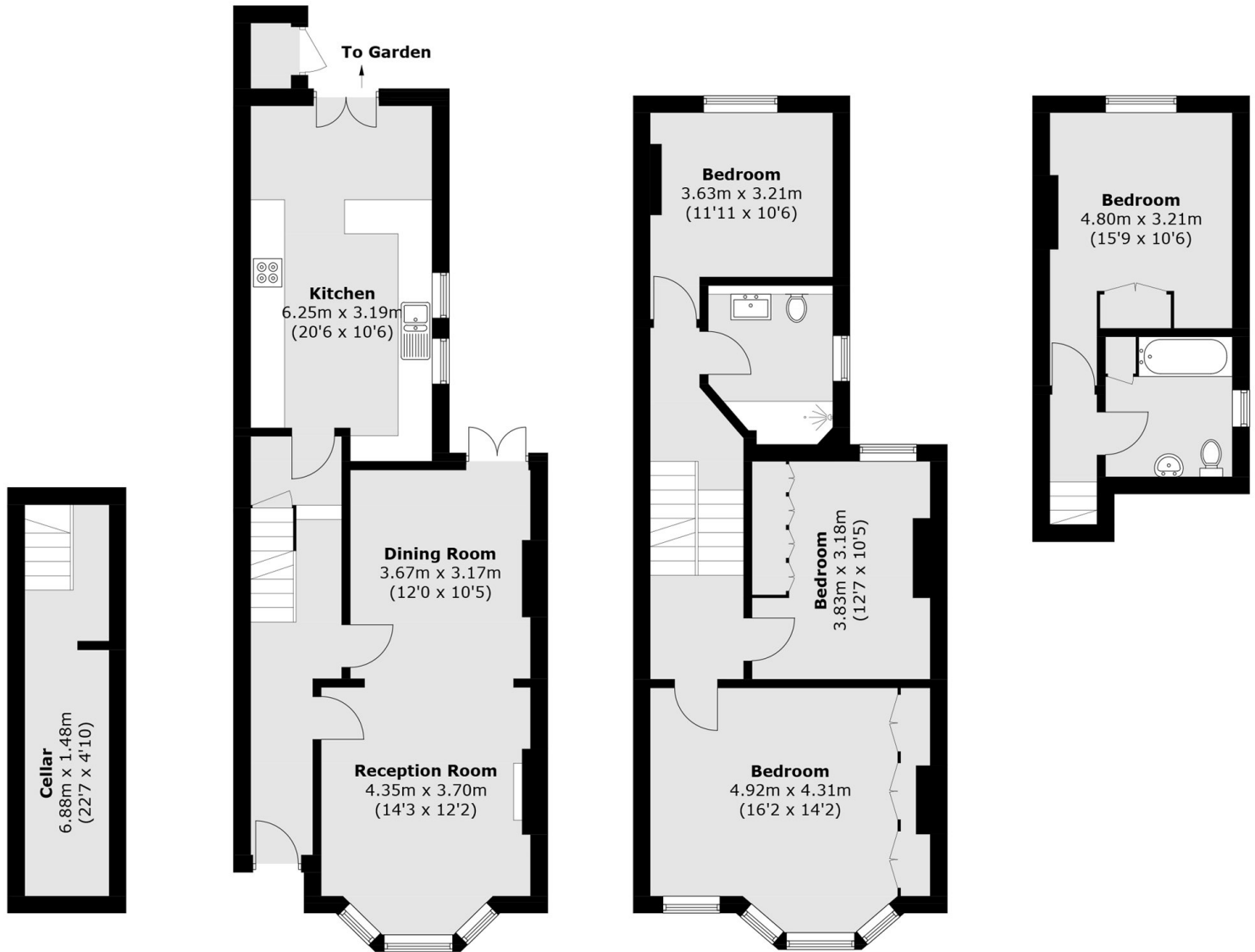
- Victorian Freehold
- Four Double Bedrooms
- Two Bathrooms
- Large Private Garden
- Extension Opportunity (STPP)
- Chain Free







# Taybridge Road, London, SW11



**Basement**

**Ground Floor**

**First Floor**

**Second Floor**

Total area (approx.): 148.1 sq. m (1,594.1 sq. ft)  
Outside Cupboard: 0.9 sq. m (9.7 sq. ft)  
(Including Basement)