



Battersea Park Road, SW11

£375,000

Located on the sought after Battersea Park Road, this one bedroom lower ground floor flat offers an open plan reception/ kitchen and modern bathroom. The property also has exclusive access to a beautifully designed garden.

Battersea Park Road is a sought after road near Battersea Park and the iconic Battersea Power Station. Located conveniently for easy access into the Kings Road in Chelsea and the busy Sloane Square. Clapham Junction railway station is also a short walk away.

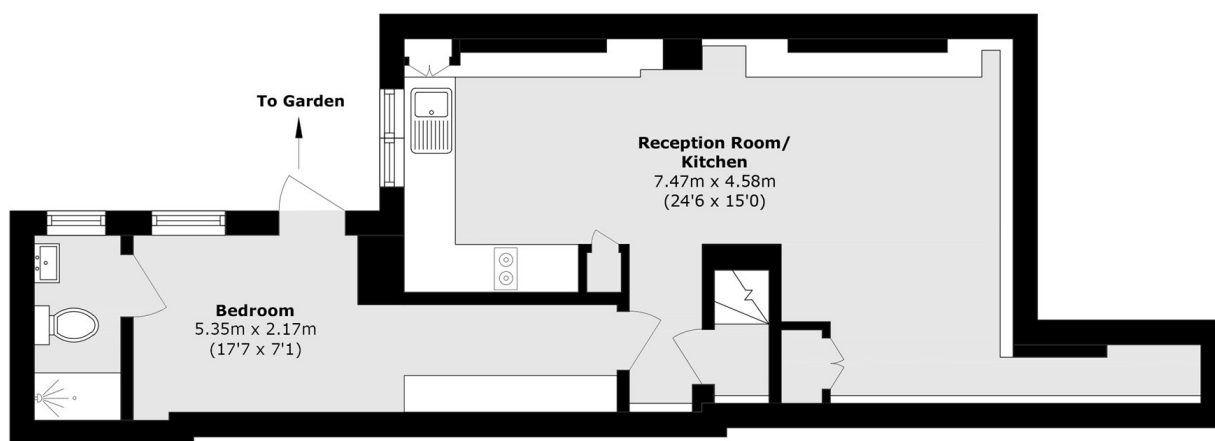
Features

- One Bedroom
- Open Plan Kitchen/Reception
- Modern Bathroom
- Private Garden
- Superb Location

Battersea Park Road, London, SW11



Ground Floor



Lower Ground Floor

Total area (approx.): 48.8 sq. m (525.2 sq. ft)