



Bridges Court Road, SW11

£1,327 Per week

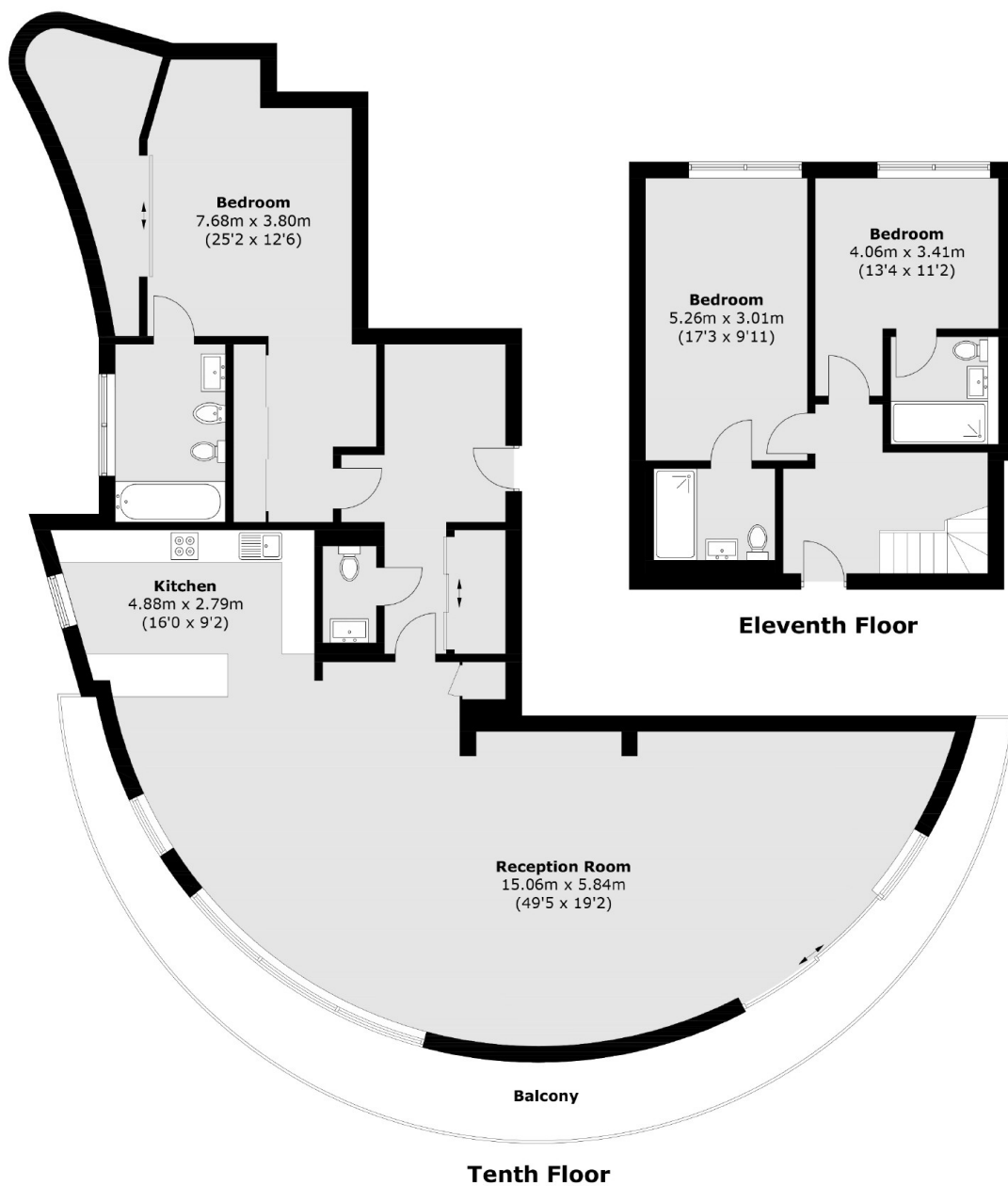
This truly stunning three bedroom penthouse apartment measures over 2,000 sq ft and it has spectacular views across The River Thames. It has a wrap around terrace, generous living space and two underground parking spaces.

The Bridges Wharf development is on the Thames Riverside path, a direct route for cycling/walking into London and an easy stroll to Battersea Park. The Thames Clipper boat stops just 3 mins walk away. Clapham Junction is an 8 minute walk away.

Features

- Penthouse Apartment
- Three Double Bedrooms
- Three Bathrooms
- Two Parking Spaces
- River Facing
- 24 Hr Concierge

Bridges Court Road, London, SW11



Total area (approx.): 195.1 sq. m (2,100 sq. ft)
Total Balcony (approx.): 28.5 sq. m (306.8 sq. ft)

Dexters

Chelsea Harbour
5 Design Centre East
London
SW10 OXF

020 7590 9515

Energy Rating: B. We aim to make our particulars both accurate and reliable. However they are not guaranteed; nor do they form part of an offer or contract. If you require clarification on any points then please contact us, especially if you're traveling some distance to view. Please note that appliances and heating systems have not been tested and therefore no warranties can be given as to their good working order.

 **RICS** | Regulated
Estate Agent
and Letting Agent

dexters.co.uk