



## Townmead Road, SW6

**£807** Per week

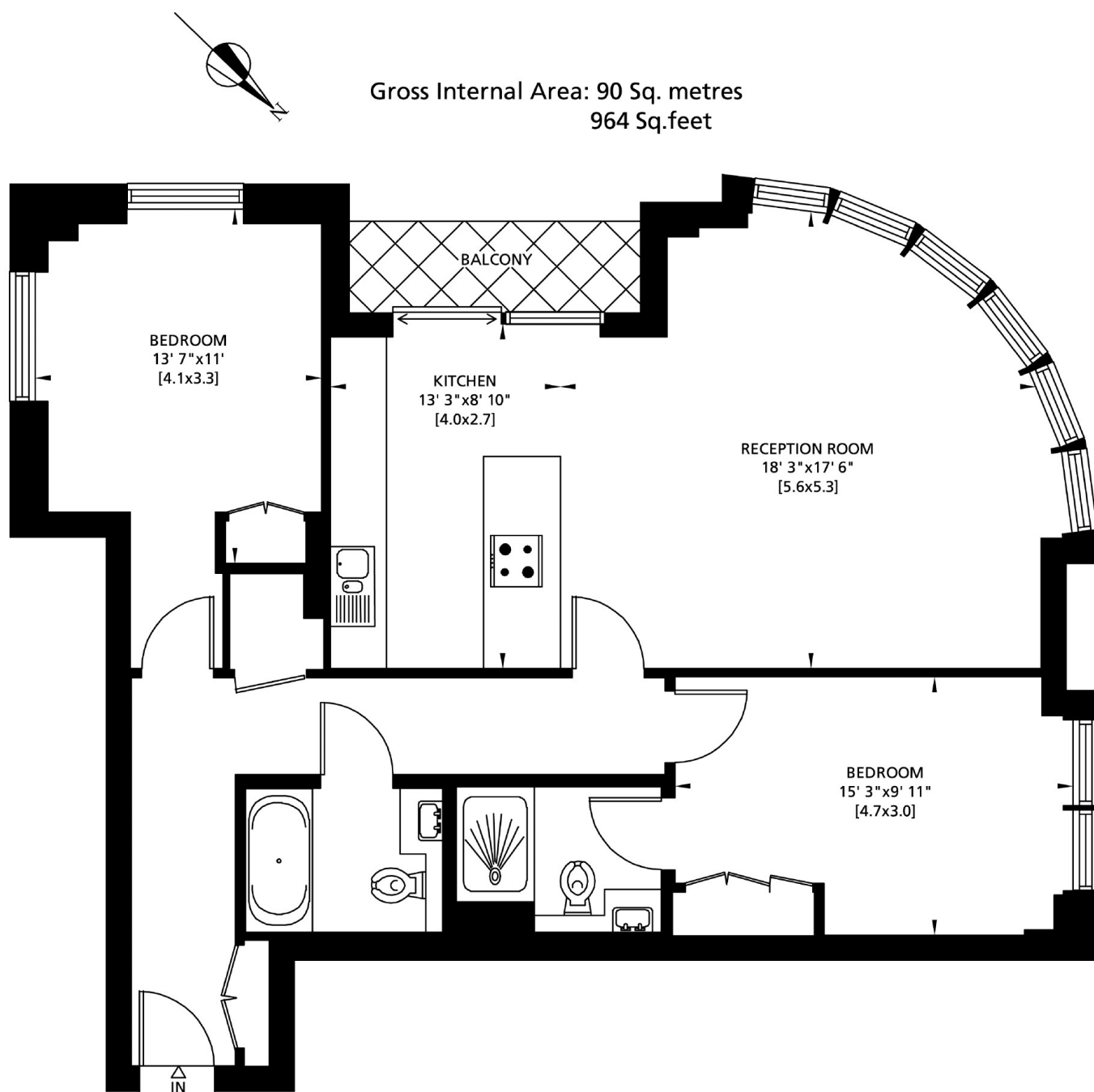
This spacious two bedroom flat on the fifth floor offers a modern fully fitted open plan kitchen living room with wood floors throughout, a modern tiled bathroom and 24 hour concierge.

Imperial Wharf is served by its own overground station. Alternatively commuters can brave the Thames with the River Taxi at Chelsea Harbour.

### Features

- Two Bedrooms
- Two Bathrooms
- Balcony
- Gym Access
- Water Included
- 24hrs Concierge

# Townmead Road, London, SW6



FIFTH FLOOR