



## Park Street, SW6

**£900** Per week

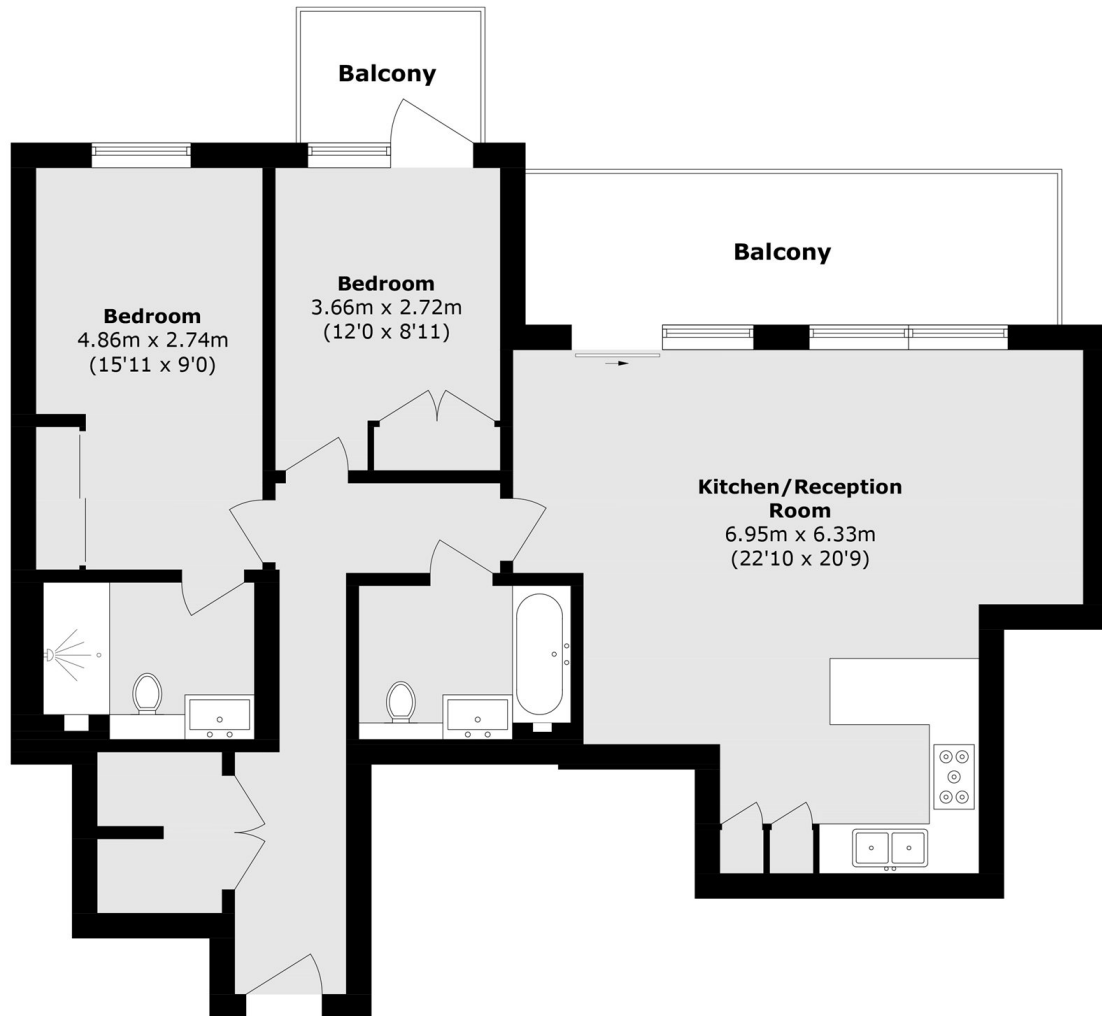
A modern two bedroom, two bathroom apartment with a large terrace and balcony. Beautifully finished with wood floors in the reception room/open plan kitchen. The property comes with access to the gym and swimming pool. One parking space is included in the rent.

Chelsea Creek is an award winning development on the Chelsea/Fulham borders and only a short walk to Imperial Wharf overground with links to the underground at West Brompton (District) and Shepherds Bush (Central). Fulham Broadway underground nearby.

### Features

- Two Double Bedrooms
- Two Bathrooms
- Terrace And Balcony
- Parking Space
- Residents Gym/Pool
- 24 Hour Concierge

# Park Street, London, SW6



## Fifth Floor

Total area (approx.): 82.6 sq. m (889.1 sq. ft)  
balcony total (approx.): 15.2 sq. m (163.6 sq. ft)