

Carlyle Court, SW10

£923 Per week

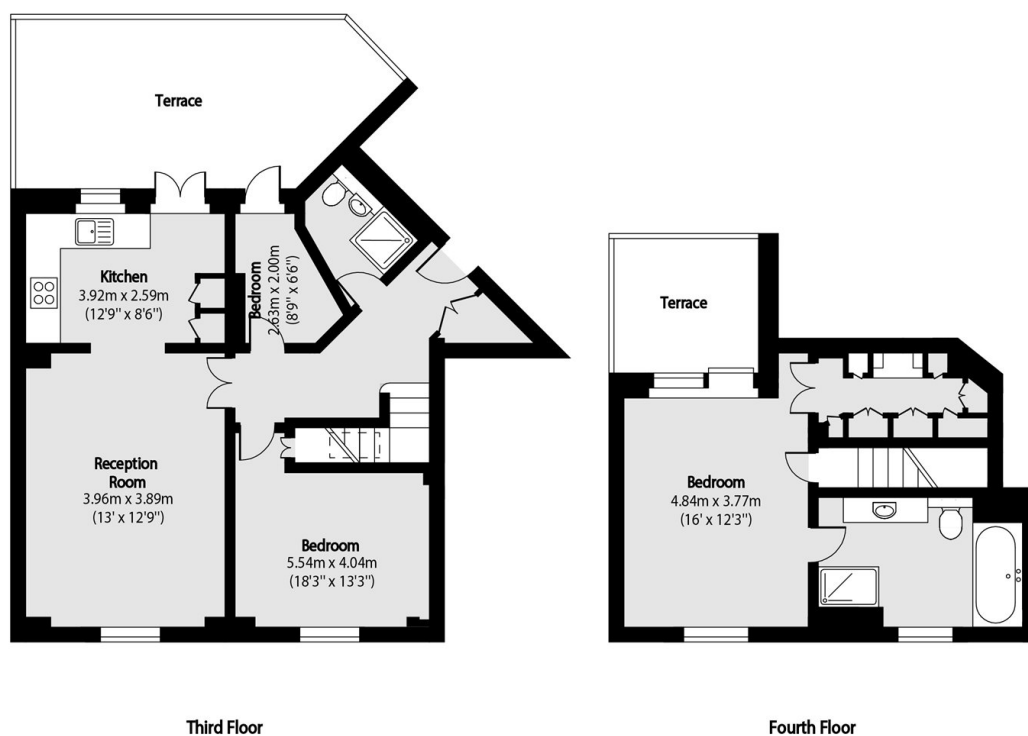
This split level two bedroom, two bathroom penthouse has been neutrally decorated throughout and benefits from lots of natural light. The flat also has a study/3rd bedroom and one underground parking space.

Carlyle Court is conveniently situated for Imperial Wharf overground station which has links to the underground at West Brompton (District Line). Supermarket megastore is within easy reach.

Features

- Two Double Bedrooms
- Two Bathrooms
- Study
- Roof Terrace
- Parking Space
- Porter

Carlyle Court, London, SW10



Total area (approx): 109.50 sq m (1179 sq. ft)

Terrace total area (approx): 31.21 sq m (336 sq. ft)