



Chatfield Road, SW11

£542 Per week

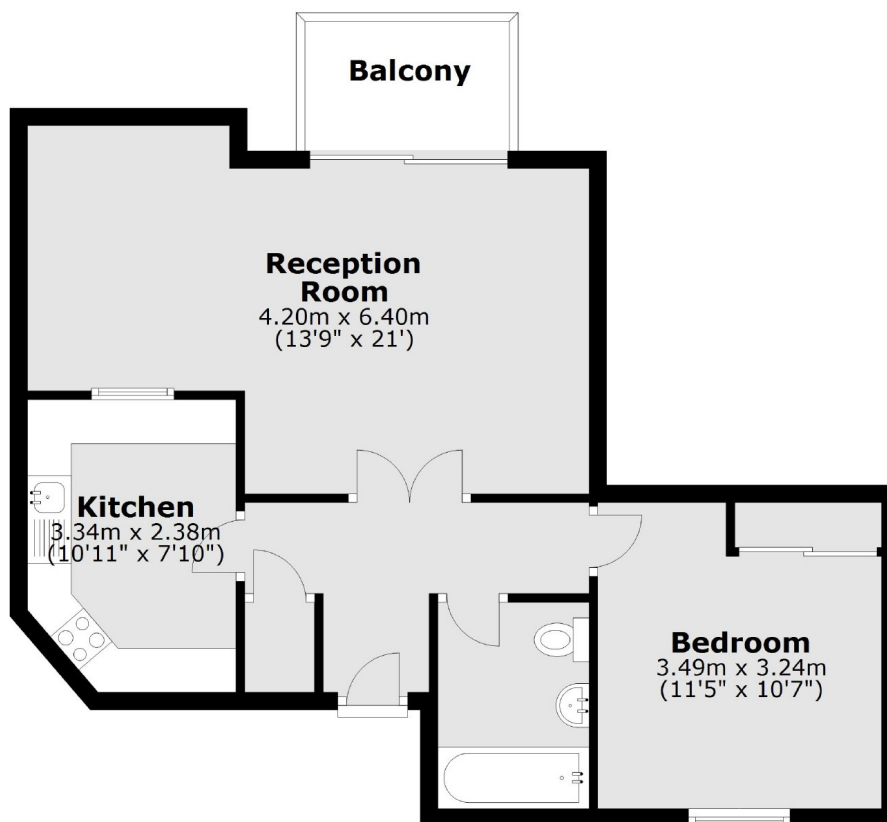
A lovely one bedroom property on the second floor of this modern riverside development with a private balcony and a parking space (separate).

Sherwood Court is ideally located for the amenities at Battersea Reach, the transport links at Clapham Junction (0.6 miles), Wandsworth Town (0.4 miles) and the river taxi service to Embankment/Blackfriars.

Features

- One Double Bedroom
- Parking Space Negotiable
- Separate Kitchen
- Riverside
- Day Porter
- Private Balcony

Chatfield Road, London, SW11



Main area: Approx. 53.0 sq. metres (570.0 sq. feet)
Plus balconies, approx. 3.7 sq. metres (39.6 sq. feet)