



Lensbury Avenue, SW6

£865 Per week

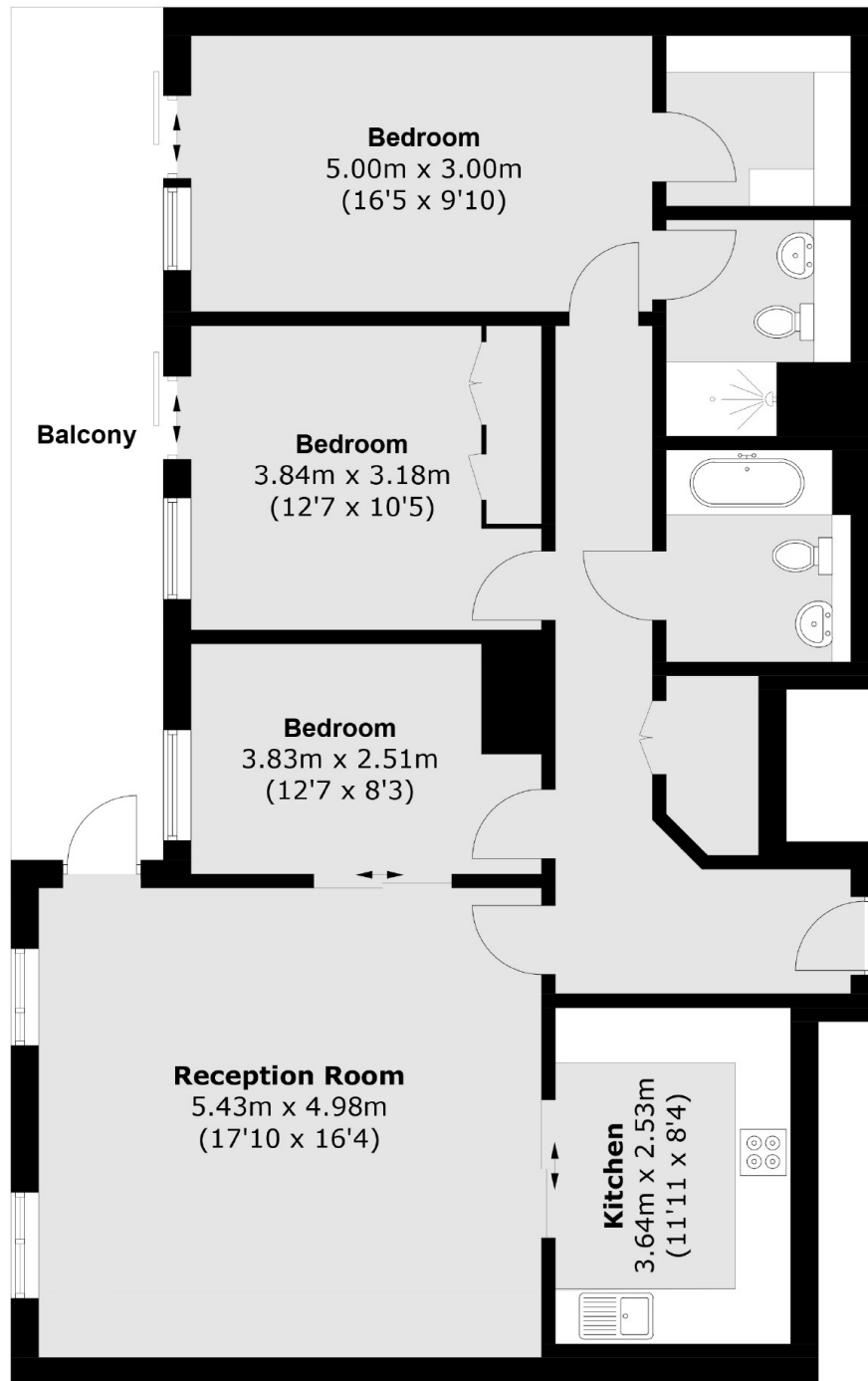
A modern two bedroom, two bathroom apartment with a separate dining room on the fifth floor in the Imperial Wharf riverside development, with a private balcony and views of the River Thames. Not suitable for sharers.

Imperial Wharf is located next to Chelsea Harbour and served by its own London Overground Station as well as being a short walk from Fulham Broadway.

Features

- Two Double Bedrooms
- Two Bathrooms
- Dining Room/3rd Bedroom
- Private Balcony
- 24-Hour Concierge
- Private Gym

Lensbury Avenue, London, SW6



Total area (approx.): 106.3 sq. m (1,144.2 sq. ft)
Balcony area : 15.3 sq. m (164.6 sq. ft)