

## York Place, SW11

£1,038 Per week

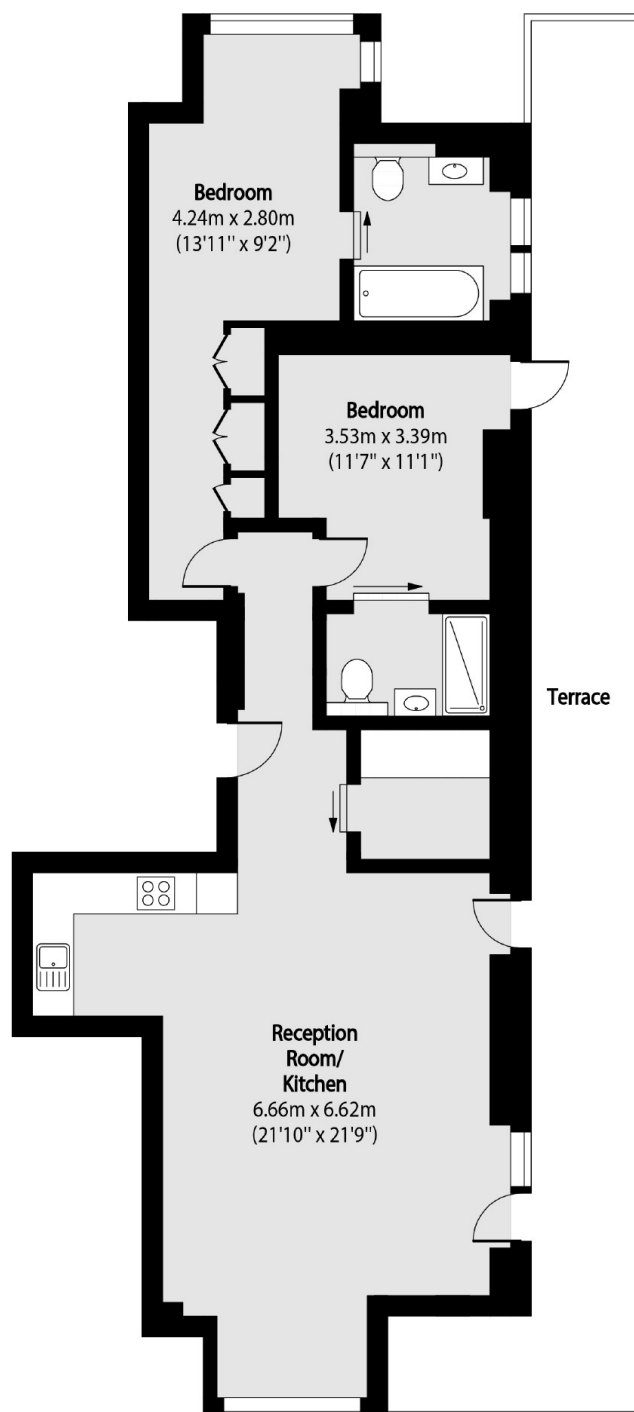
An incredible two bedroom, two bathroom apartment in a brand new development in Battersea (Coda Residences).

Coda Residences is located in the heart of Battersea with remarkable transport links such as the Uber Boat by Thames Clippers and Clapham Junction with access to Gatwick Airport.

### Features

- Two Bedrooms
- Two Bath
- 24hr Concierge
- Private Balcony
- Gym
- Furnished

# York Place, London, SW11



Total area (approx): 91.32 sq m (983 sq. ft)

Terrace total area (approx): 32.64 sq m (351 sq. ft)