



## Harbour Avenue, SW10

### £1,350,000

A contemporary one bedroom apartment set within popular Chelsea Harbour.

B54 - This West facing apartment is located on the 5th floor and offers large open plan living, king size bedroom and luxury bathroom.

As a resident of Lighterman Towers, you have access to leisure facilities including a state-of-the-art gym, a private, landscaped roof-terrace with stunning views towards the River Thames and 24- hour security and concierge service.

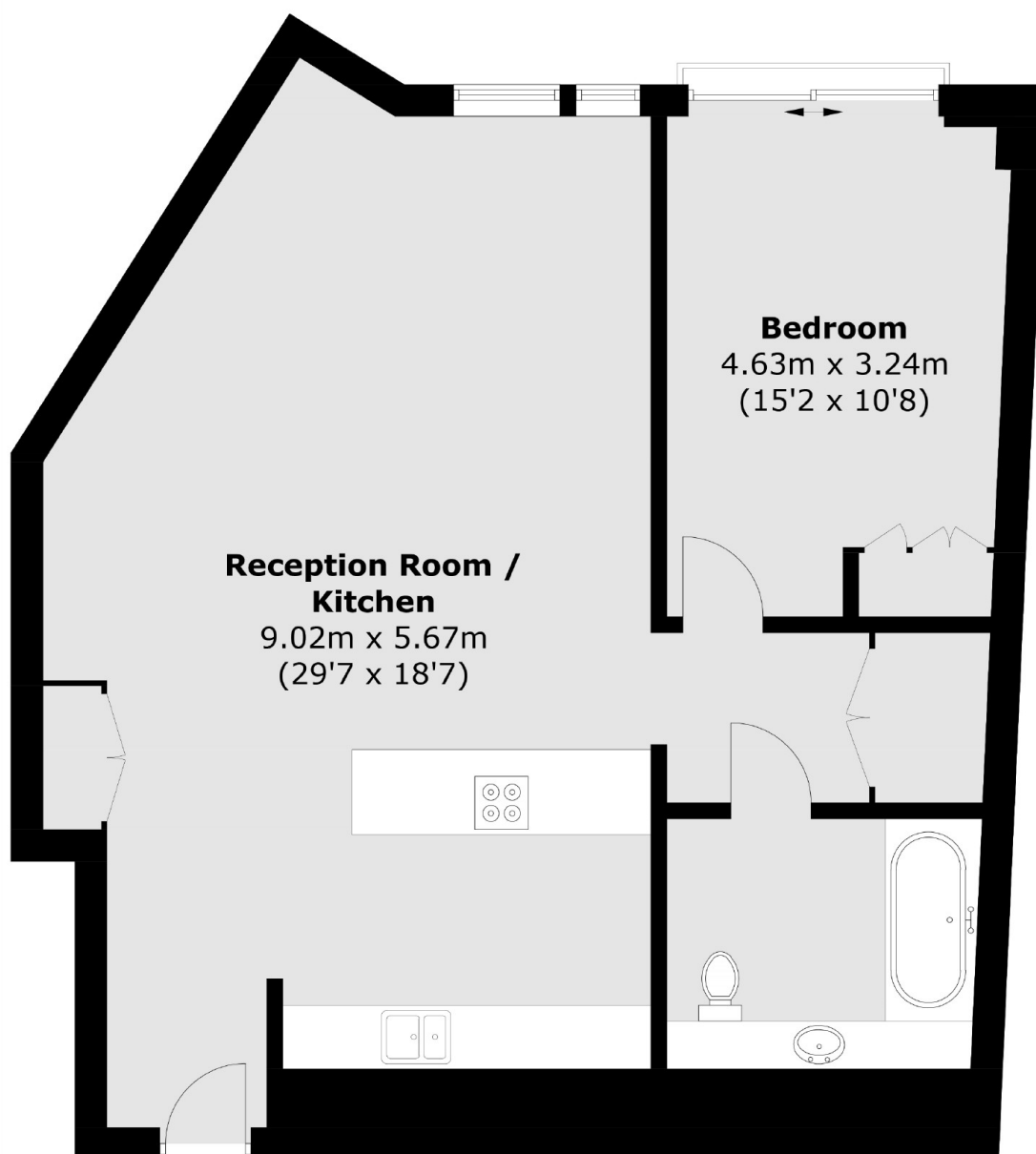
\*\* Show home marketing may have been used \*\*

Lighterman Towers is just a few moments walk to Imperial Wharf station with access to the Overground and one stop to West Brompton with the District line. 24 hour buses run close by on the King's Road. Thames Clipper River services are on hand from Imperial Wharf to take you as far as Canary Wharf and Greenwich. One of the best ways to travel around London.

### Features

- 819 Sqft One Bedroom!
- 24 Hour Concierge
- Fully Fitted Gym
- Communal Roof Terrace
- Large Balcony
- Fantastic Pied-à-Terre

# Harbour Avenue, Chelsea, SW10



Total area (approx.): 76.6 sq. m (824.5 sq. ft)