



Chatfield Road, SW11

£385,000

A one bedroom apartment located on the first floor in a newly built luxurious new build development. There is a modern kitchen with German appliances. The perfect first time buyer or pied-a-terre property. A choice of flooring is available, for all apartments of either Vinyl or carpet finishings.

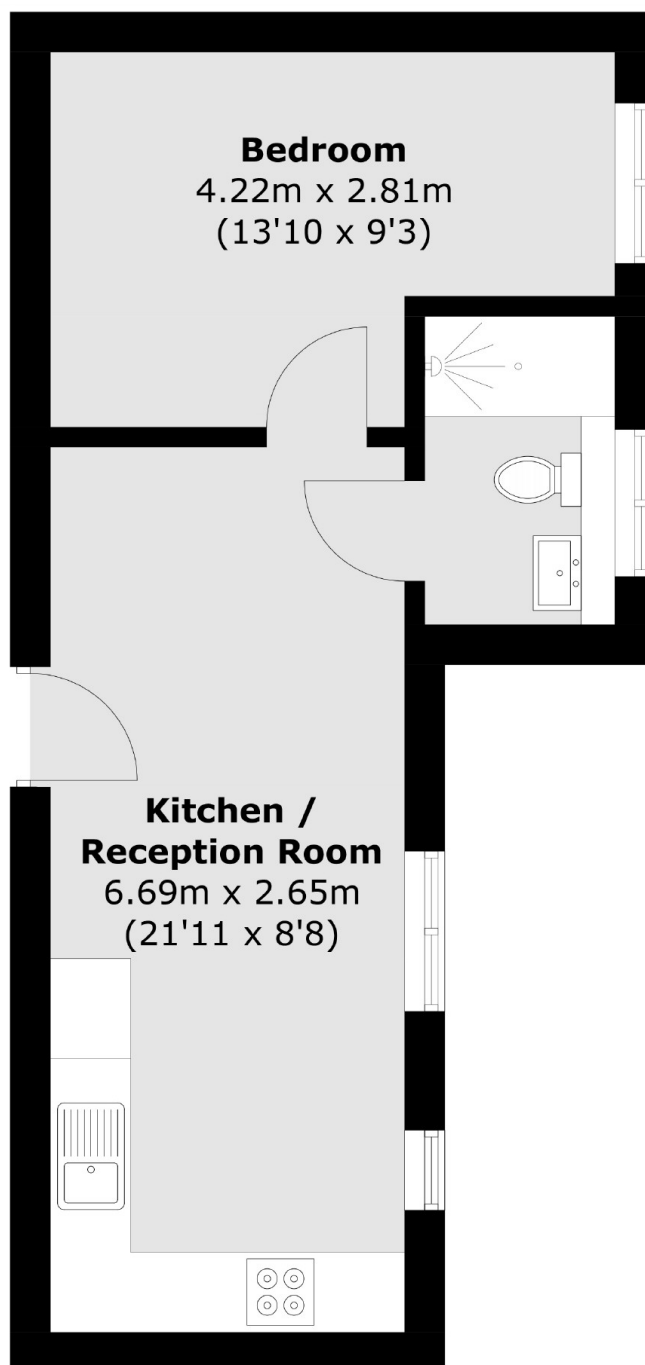
Please note - Whilst every effort has been made to accurately portray the development, CGI images have been used, alongside indicative floorplans produced from the planning documents.

Chatfield Road is conveniently located on the south of the River Thames. Enjoy long walks along the banks of the River Thames, jump on a uber boat, to see London's landmarks on your journey! There is quick and direct access via Clapham Junction Station just moments away from your doorstep!

Features

- Riverside Location
- One Bedroom
- One Bathroom
- First Floor Apartment
- New Build Development
- Just By The Thames Path
- Walk To Wandsworth Town & Clapham Junction Station/s

Chatfield Road, Battersea, SW11



Total area (approx.): 32.3 sq. m (347.7 sq. ft)

Dexters

New Homes South London
12 The Broadway
London
SW19 1RF
Sales
020 8674 4555

Energy Rating: . We aim to make our particulars both accurate and reliable. However they are not guaranteed; nor do they form part of an offer or contract. If you require clarification on any points then please contact us, especially if you're traveling some distance to view. Please note that appliances and heating systems have not been tested and therefore no warranties can be given as to their good working order.

 **RICS** | Regulated
Estate Agent
and Letting Agent

dexters.co.uk