

Elm Grove, SW19

£575,000

65% NOW SOLD - PLEASE CALL TO VIEW

A first floor apartment with two bedrooms and one bathroom located within the centre of Wimbledon. There is a high specification throughout, including German & Italian appliances in the kitchen. Further benefits include low running costs and a share of the freehold.

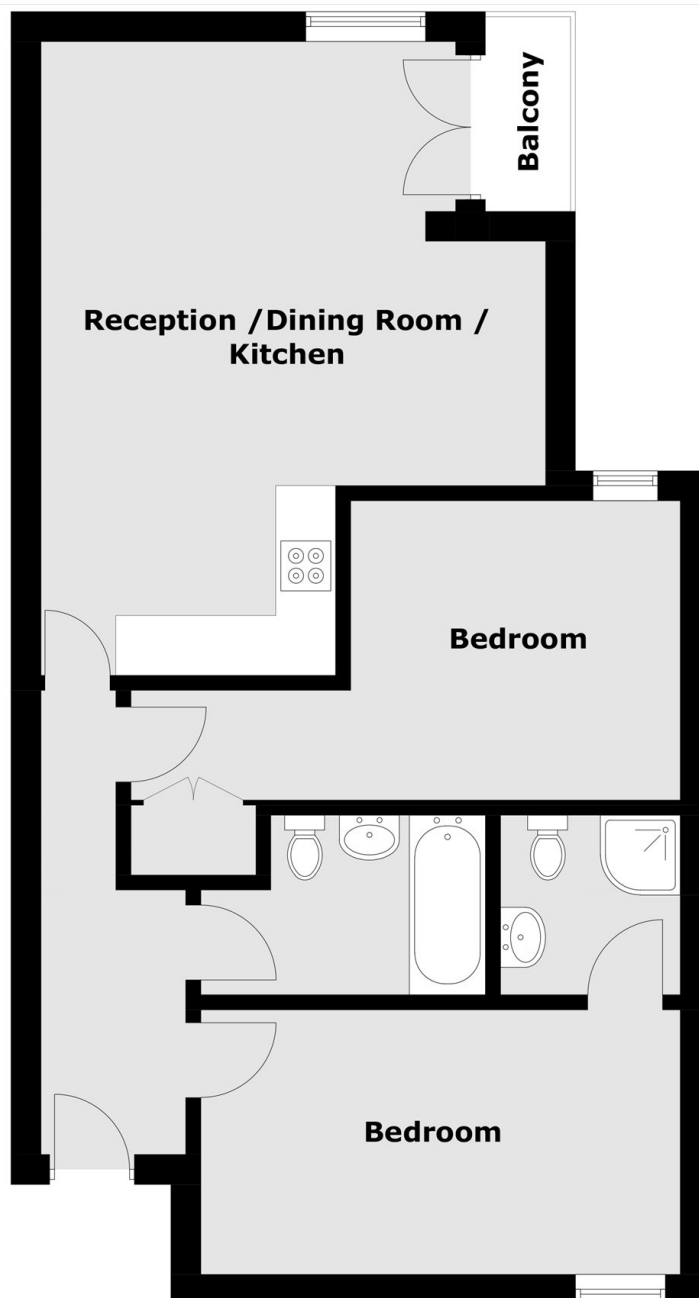
Please note - Whilst every effort has been made to accurately portray the development, CGI images have been used, alongside indicative floorplans produced from the planning documents.

Elm Grove is a cul-de-sac situated just off of Worple Road and just under half a mile walk from Wimbledon Broadway allowing easy access to the town centre's restaurants and shops. Transport links include overground, underground and a number of good bus routes.

Features

- Eco-Conscious Build
- Two Bedrooms
- One Bathroom
- Balcony
- Wimbledon - Walking Distance
- Bike & Parcel Store
- Share Of The Freehold

Elm Grove, Wimbledon, SW19



Flat 15 Second Floor

Total area (approx.): 62.01 sq. m (667.5 sq. ft)
Balcony: 3.0 sq. m (32.3 sq. ft)