

## Elm Grove, SW19

### £500,000

A ground floor apartment with two bedrooms and two bathrooms located within the centre of Wimbledon. There is a high specification throughout, including German & Italian appliances in the kitchen. Further benefits include low running costs and a share of the freehold.

65% NOW SOLD - PLEASE CALL TO VIEW.

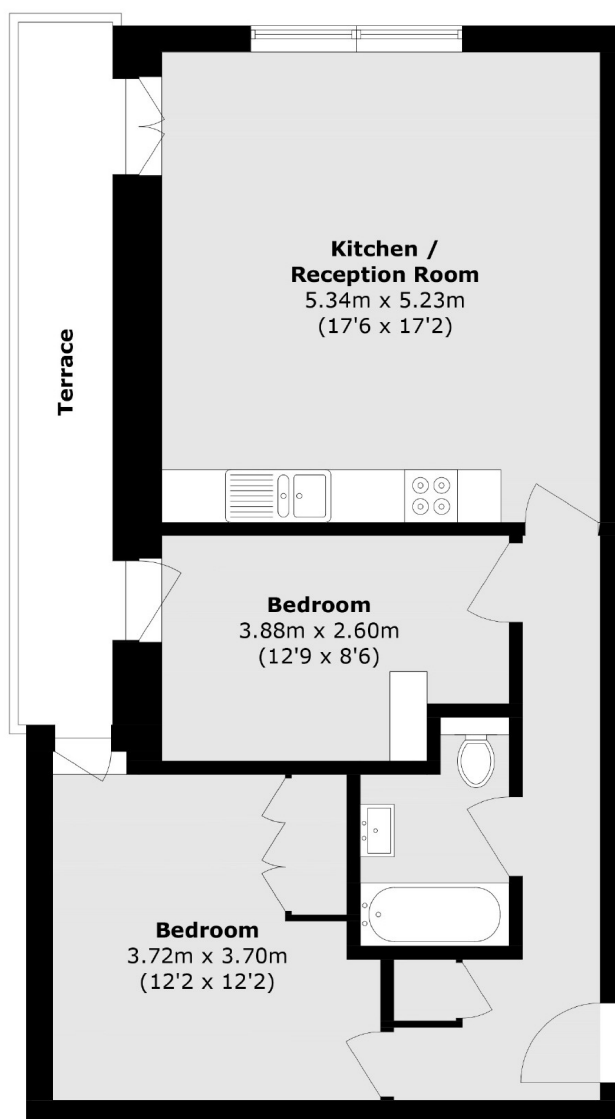
Please note - Whilst every effort has been made to accurately portray the development, CGI images have been used, alongside indicative floorplans produced from the planning documents.

Elm Grove is a cul-de-sac situated just off of Worple Road and just under half a mile walk from Wimbledon Broadway allowing easy access to the town centre's restaurants and shops. Transport links include overground, underground and a number of good bus routes.

### Features

- Eco-Conscious Build
- Two Bedrooms
- Two Bathrooms
- Terrace/Patio Garden
- Wimbledon - Walking Distance
- Bike & Parcel Store
- Share Of The Freehold

# Elm Grove, Wimbledon, SW19



## Ground Floor

Total area (approx.): 66.0 sq. m (710.4 sq. ft)

Terrace area (approx.): 8.5 sq. m (91.4 sq. ft)