



Merton Road, SW19

£500,000

Victorian style new build apartment, within close walking distance to South Wimbledon Tube (Northern Line) estimated at just 65M walk away. A one double bedroom apartment with private roof terrace, a 999 year lease and a share of the freehold. Energy saving measures include an efficient gas boiler, underfloor heating and a Vent Axia Mechanical Ventilation System.

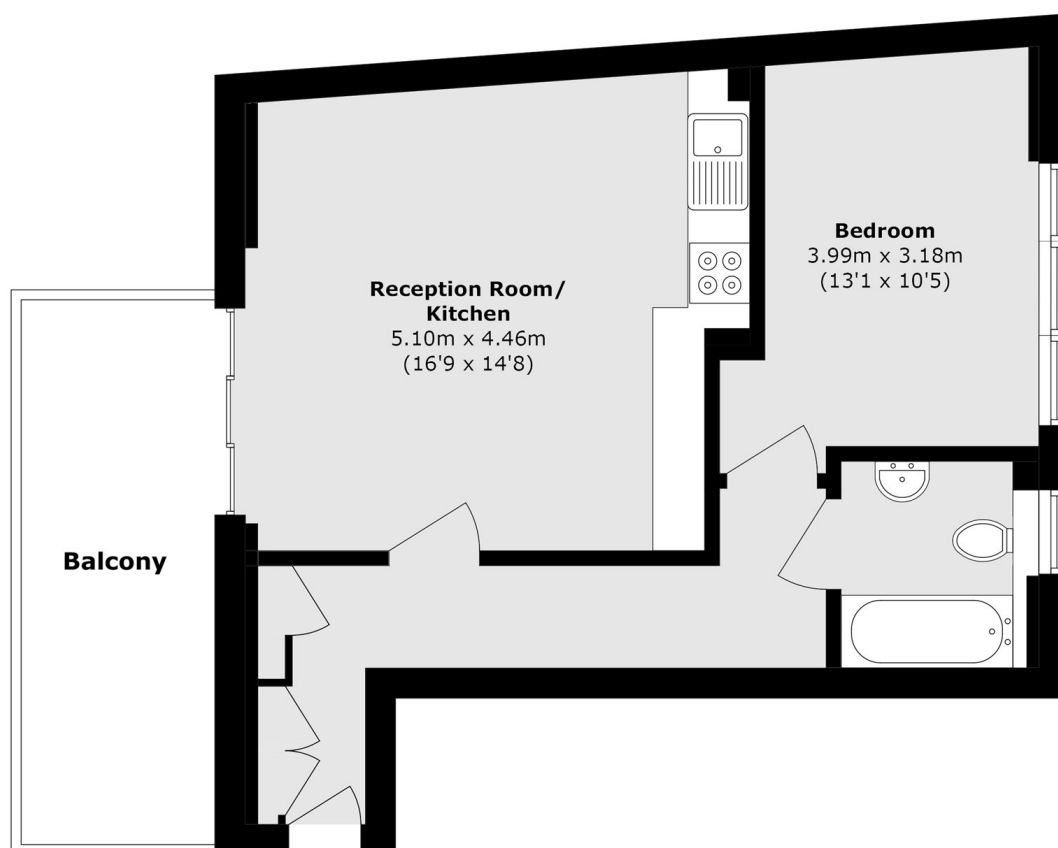
**** Please note that Images are representative, using show home photography from another project by the same developer. ****

Located adjacent to South Wimbledon Underground station (Northern line), which is just approximately 65 metres away. Merton Park and Morden Road Tram Stops are also nearby. Merton Road provides easy access to the A3, and the M25 motorway. There are numerous shops, bars, and restaurants on Merton High Street and in the wider Wimbledon area.

Features

- Large Double Bedroom
- Private Terrace
- Worcester Gas Boilers
- Vent-Axia Mechanical Ventilation System
- Wet Underfloor Heating
- NEF Appliances
- Quartz Worktops
- Opposite South Wimbledon Underground

Merton Road, South Wimbledon, SW19



Total area (approx.): 48.6 sq. m (523.1 sq. ft)

Balcony area (approx.): 10.4 sq. m (111.9 sq. ft)