



Brockley Cross, SE4

£375,000

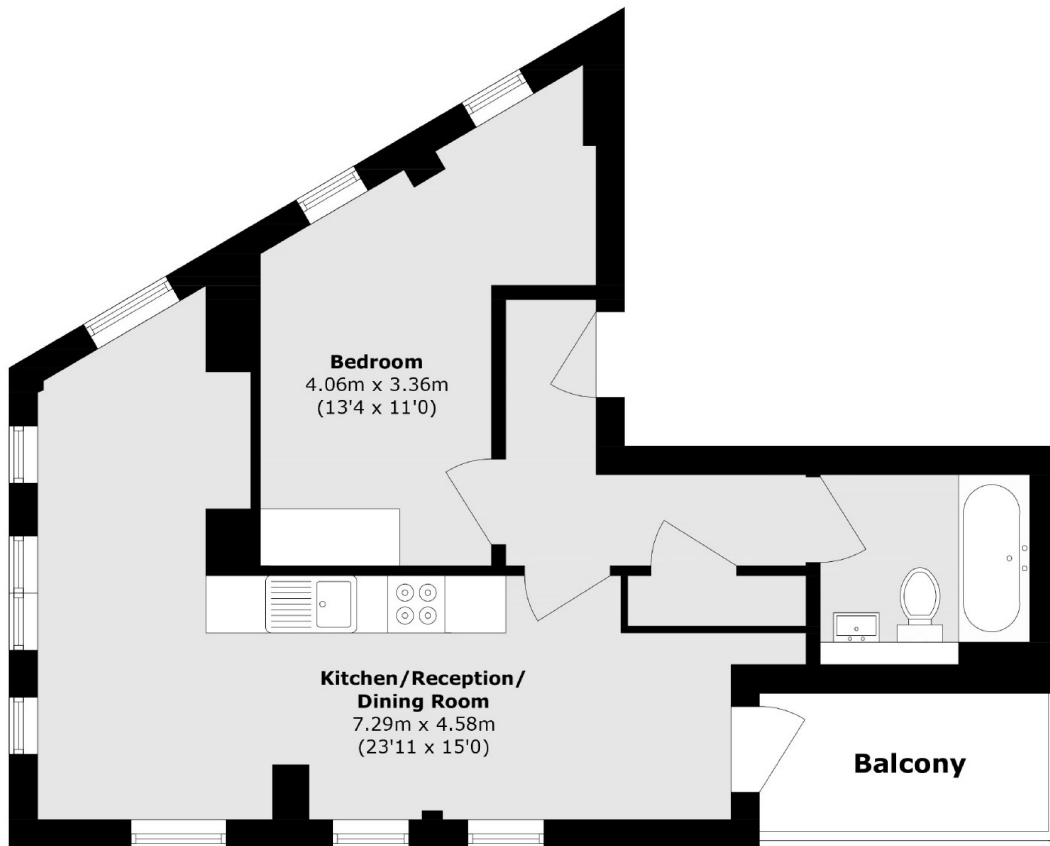
Designed by award winning architects, Brockley Cross is an exquisite development of highly energy efficient homes nestled in the heart of the eponymous leafy London suburb of Brockley. Situated less than 5 minutes walk from the train and Windrush line station providing direct links to London Bridge and Canada Water, these exceptionally energy efficient apartments will be ready to move into from the end of June 2025.

The area is surrounded by lush green spaces such as Hilly Fields, Peckham Rye Common, and the Brockley Nature Reserve, perfect for leisurely strolls and outdoor activities. Just a stone's throw away, the trendy neighbourhood of Peckham adds to the appeal with its vibrant cultural scene and eclectic mix of shops, cafes, pubs and entertainment.

Features

- Low Running Costs
- 10 Year Structural Warranty
- Award winning designers
- Bosch Appliances
- Share of Freehold
- No Onward Chain
- Private balconies and terraces
- Ready to move in June 2025

Brockley Cross, London, SE4



Total area (approx.): 48.4 sq. m (520.9 sq. ft)

Balcony area (approx.): 4.5 sq. m (48.4 sq. ft)