

## Elm Grove, SW19

### £600,000

A collection of nineteen new build apartments including studio, one and two bedroom apartments all with their own private outside spaces, a share of the freehold and a communal bike and parcel store.

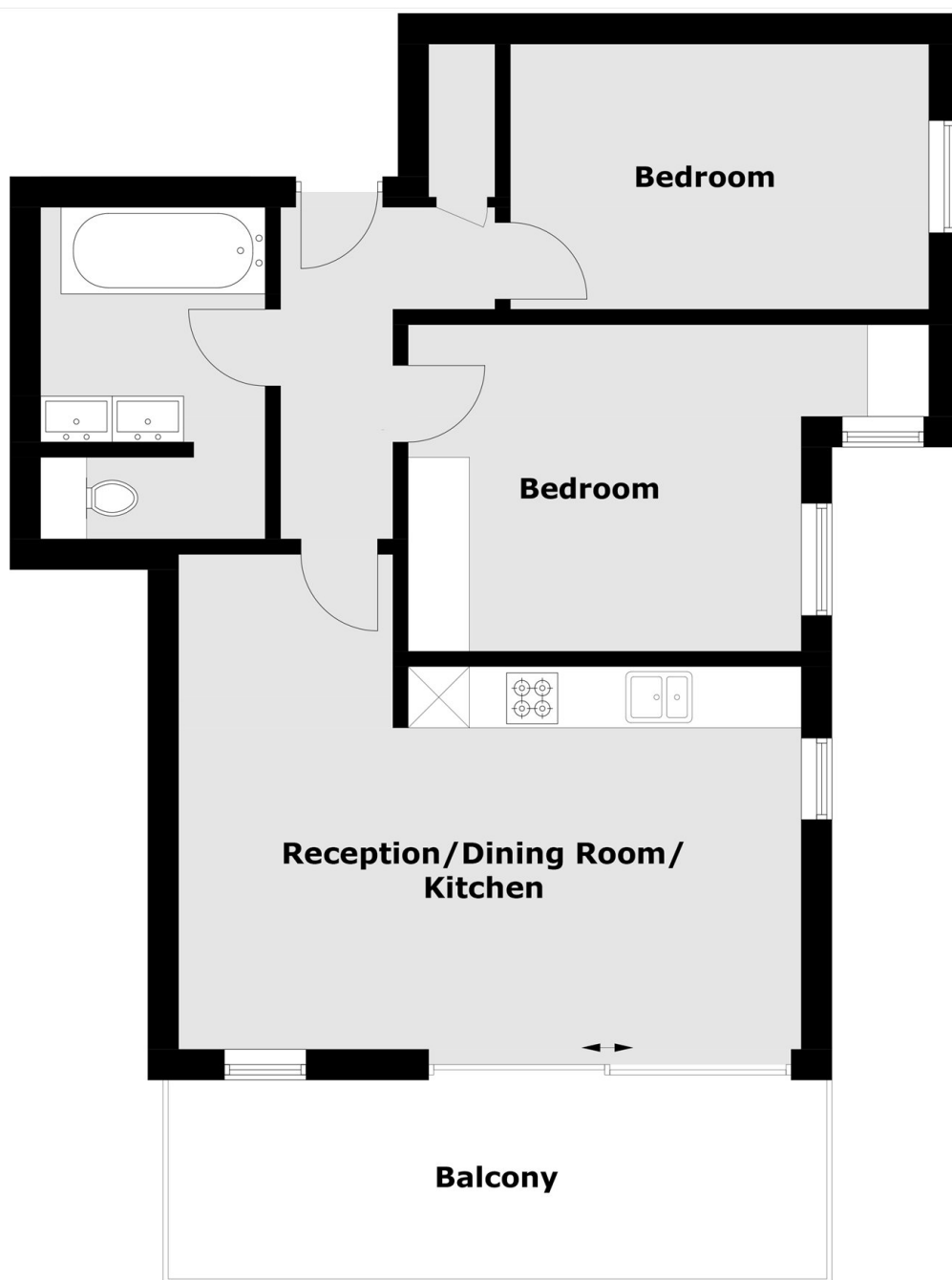
Please note - Images may be of development show flat.

Elm Grove is a cul-de-sac situated just off of Worple Road and just under half a mile walk from Wimbledon Broadway allowing easy access to the town centre's restaurants and shops. Transport links include overground, underground and a number of good bus routes

### Features

- Eco-Conscious Build
- Two Bedrooms
- One Bathroom
- Balcony
- Wimbledon - Walking Distance
- Bike & Parcel Store
- Share Of The Freehold

# Elm Grove, LONDON, SW19



## Flat 18 Third Floor

Total area (approx.): 64.22 sq. m (691.2 sq. ft)  
Balcony: 12.73 sq. m (137.0 sq. ft)

# Dexters

New Homes South London  
12 The Broadway  
London  
SW19 1RF  
Sales  
020 8674 4555

Energy Rating: . We aim to make our particulars both accurate and reliable. However they are not guaranteed; nor do they form part of an offer or contract. If you require clarification on any points then please contact us, especially if you're traveling some distance to view. Please note that appliances and heating systems have not been tested and therefore no warranties can be given as to their good working order.

 **RICS** | Regulated  
Estate Agent  
and Letting Agent

[dexters.co.uk](https://www.dexters.co.uk)