

DURNSFORD COURT
WIMBLEDON

BROCHURE

A contemporary
space,

bound by
Wimbledon
charm.

DURNSFORD COURT

Durnsford Court presents a meticulously designed collection of eight homes that harmonise modern architecture with the character of Wimbledon. Each residence offers spacious interiors, abundant natural light, and private outdoor spaces, fostering a seamless connection between indoor comfort and outdoor tranquillity, perfect for modern living.



DURNSFORD COURT







EXTERIOR

Durnsford Court's façade features soft, neutral brickwork that reflects Wimbledon's architectural heritage. Lush greenery and thoughtfully designed outdoor spaces enhance the sense of serenity and privacy.



INTERIOR

Inside Durnsford Court, simplicity and quality craftsmanship take center stage. Natural tones, expansive windows, and premium finishes create a harmonious living environment that invites relaxation and rejuvenation.





NEIGHBOURHOOD

Wimbledon's unique blend of urban energy and suburban tranquillity provides an ideal setting for modern living. From artisan markets to scenic parks, the neighbourhood caters to a variety of lifestyles. Its excellent transport links ensure easy access to central London, making it a desirable location for those seeking both convenience and character.





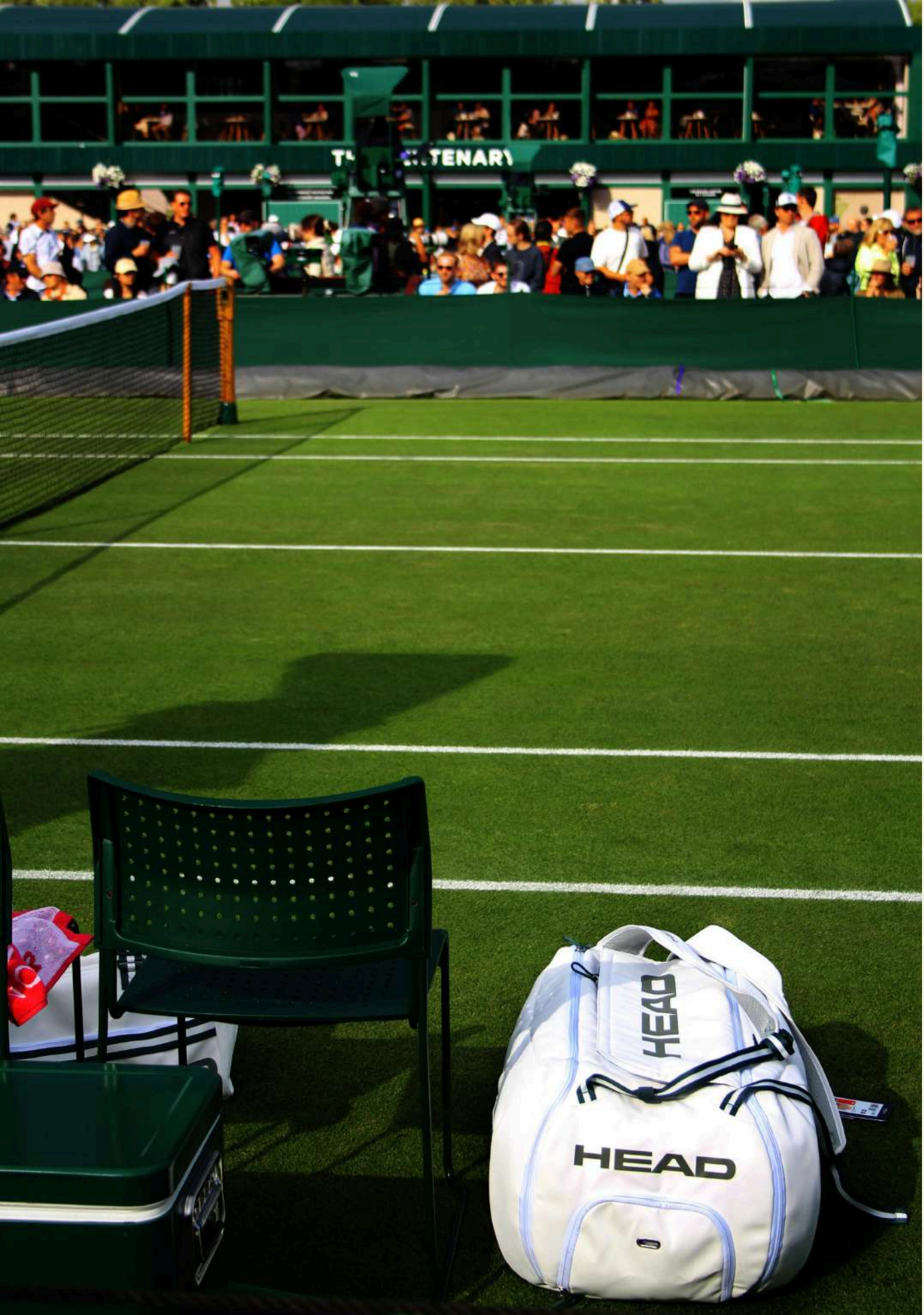
DURNSFORD COURT



DURNSFORD COURT



DURNSFORD COURT

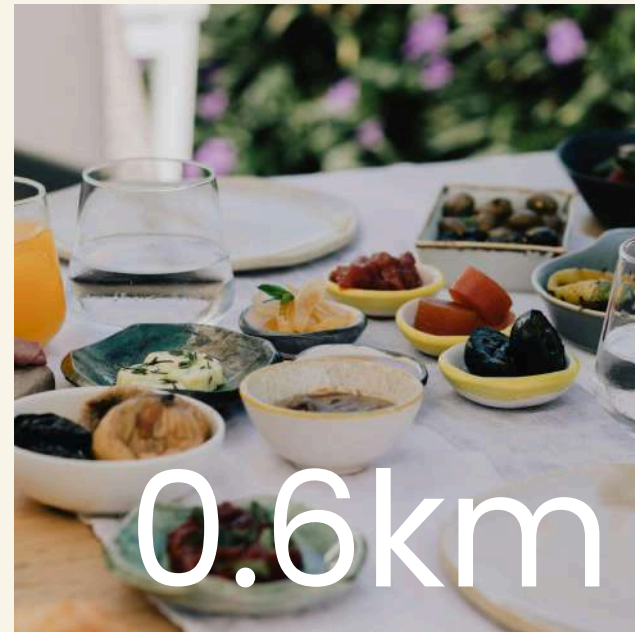


Neighbourhood Guide

THE
WOODMAN



WIMBLEDON
TAPAS



THE OLIVE
GROVE



PRESS
CAFE



LEATHER
BOTTLE



BOMBAY
DELIGHT





WELLBEING & GREEN SPACES

Durnsford Court offers residents access to a variety of green spaces and fitness facilities. Whether it's a morning jog in the park or a yoga session at a local studio, wellness is perfectly positioned for those prioritising health and fitness in their daily routines.

Wimbledon Park – 0.6 km | 6 min walk

A vast park featuring a lake, tennis courts, and open spaces ideal for various outdoor activities.

Haydons Road Recreation Ground – 1.2 km | 12 min walk

Offers sports facilities, children's play areas, and open fields for relaxation and exercise.

South Park Gardens – 1.5 km | 16 min walk

A beautifully maintained Victorian park with landscaped gardens and peaceful walking paths.

Nuffield Health Wimbledon – 1.0 km | 10 min walk

A comprehensive fitness centre offering gym facilities, swimming pool, and wellness services.

Hot Yoga Wimbledon – 0.8 km | 9 min walk

A dedicated studio providing a range of yoga classes in a heated environment for enhanced flexibility and detoxification.

Virgin Active – Wimbledon – 1.3 km | 13 min walk

A premium health club featuring state-of-the-art gym equipment, group classes, and spa amenities.

Transport Times

WIMBLEDON PARK

Walking: 10 minutes
Driving: 2 minutes

EARL'S COURT

Public Transport: 20 minutes
Driving: 30 minutes

VICTORIA

Public Transport: 30 minutes
Driving: 30 minutes

WESTMINSTER

Public Transport: 30 minutes
Driving: 35 minutes

CANARY WHARF

Public Transport: 50 minutes
Driving: 60 minutes

LONDON BRIDGE

Public Transport: 50 minutes
Driving: 50 minutes

BANK

Public Transport: 45 minutes
Driving: 50 minutes

HEATHROW

Public Transport: 60 minutes
Driving: 60 minutes

GATWICK

Public Transport: 60 minutes
Driving: 50 minutes

DURNSFORD COURT

Begin your journey through
2000 years of history from your
new home at Durnsford Court.

Schools & Education

PRIMARY

Wimbledon Park Primary School

Walking: 10 minutes

Public Transport: 10 minutes

Holy Trinity CofE Primary School

Walking: 15 minutes

Public Transport: 20 minutes

Dundonald Primary School

Walking: 25 minutes

Public Transport: 15 minutes

Garfield Primary School

Walking: 12 minutes

Public Transport: 15 minutes

The Priory CofE School

Walking: 12 minutes

Public Transport: 15 minutes

SECONDARY

Ricards Lodge High School

Walking: 15 minutes

Public Transport: 20 minutes

Harris Academy Wimbledon

Walking: 25 minutes

Public Transport: 20 minutes

Rutlish School

Walking: 30 minutes

Public Transport: 25 minutes

Ursuline High School

Walking: 30 minutes

Public Transport: 30 minutes

Wimbledon College

Walking: 30 minutes

Public Transport: 30 minutes

DURNSFORD COURT



Floorplans

RESIDENCE 1 & 2

GROUND FLOOR BLOCK A

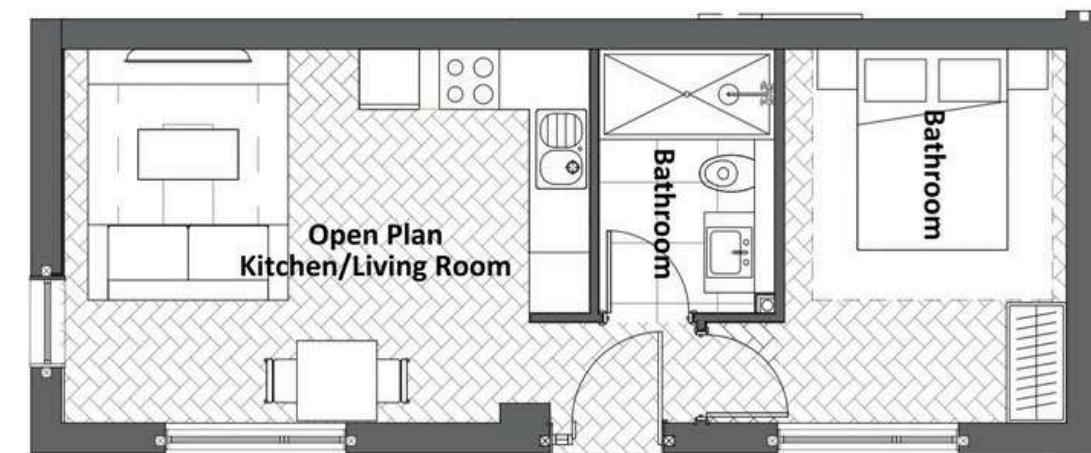
Flat 1 - 1 Bedroom / 1 Bathroom

Total area: 38.5 sqm



Flat 2 - 1 Bedroom / 1 Bathroom

Total area: 51 sqm

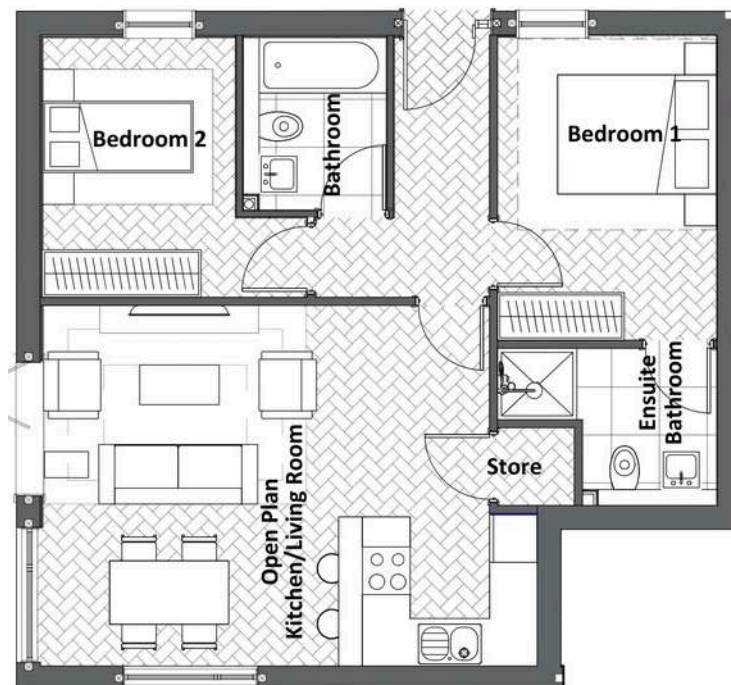


RESIDENCE 3 & 4

GROUND FLOOR BLOCK A

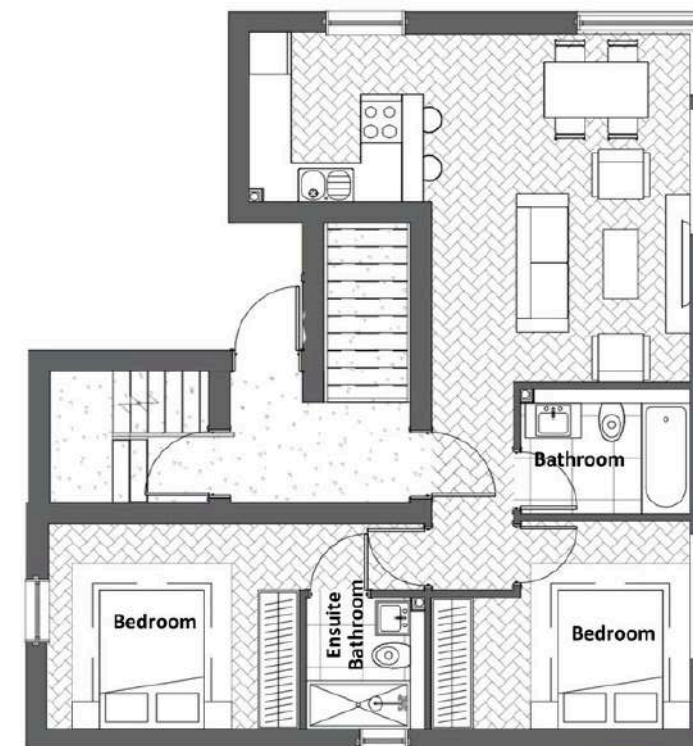
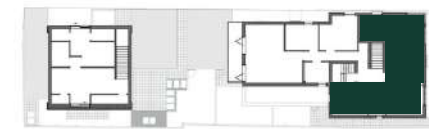
Flat 3 – 2 Bedroom / 2 Bathroom

Total area: 63.5 sqm



Flat 4 – 2 Bedroom / 2 Bathroom

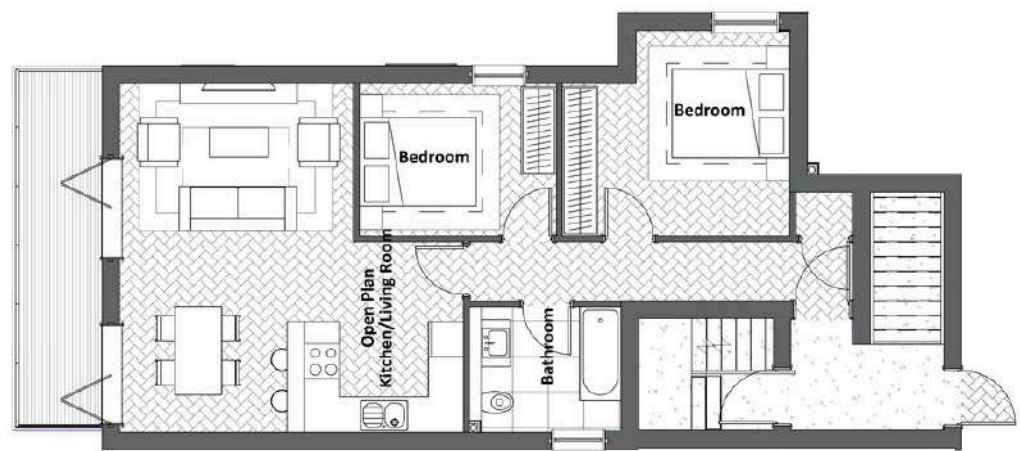
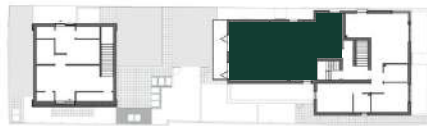
Total area: 62 sqm



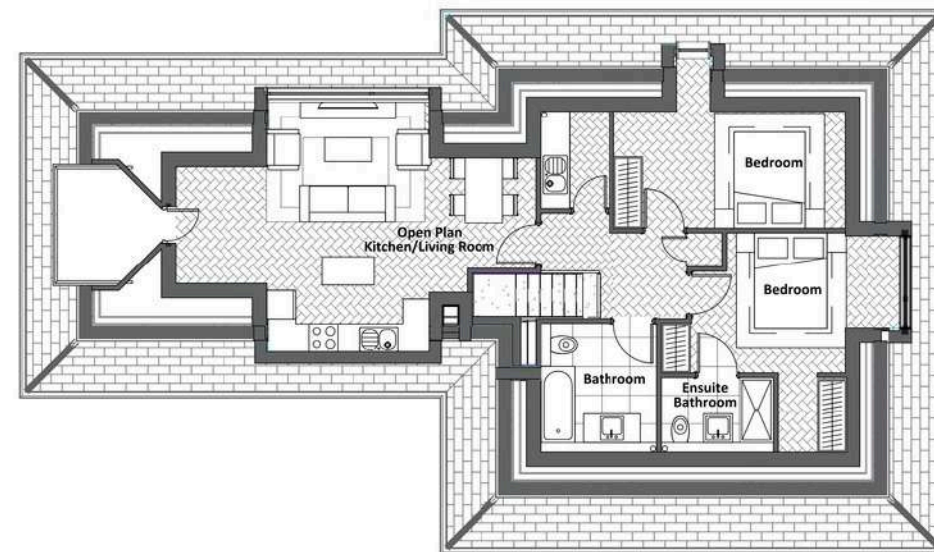
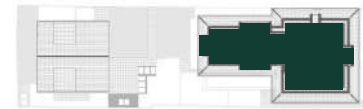
RESIDENCE 5 & 6

FIRST FLOOR BLOCK A (5)
SECOND FLOOR BLOCK A (6)

Flat 5 - 2 Bedroom / 1 Bathroom
Total area: 64.5 sqm



Flat 6 - 2 Bedroom / 2 Bathroom
Total area: 89 sqm



RESIDENCE 7 & 8

GROUND FLOOR BLOCK B (7)

FIRST FLOOR BLOCK A (8)

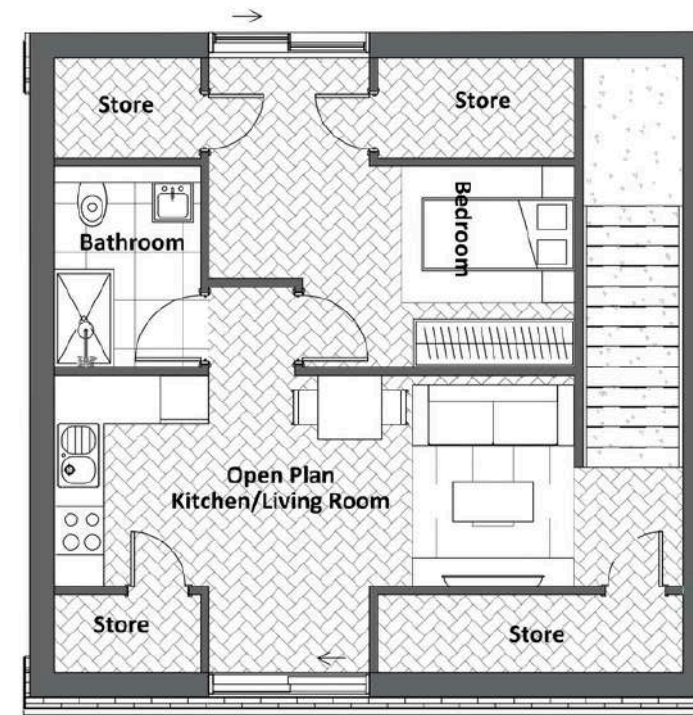
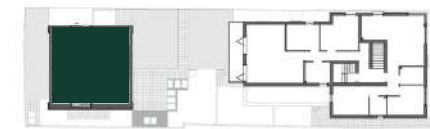
Flat 7 - 1 Bedroom / 1 Bathroom

Total area: 52 sqm



Flat 8 - 1 Bedroom / 1 Bathroom

Total area: 40.3 sqm



BRAND PROPERTY



Brand Property merges period-inspired elegance with modern luxury. Each home strikes a balance between aesthetic integrity and investment-savvy, crafted for those who value lasting quality and long-term appreciation. These are legacy investments, built to endure in both substance and significance.

We prove beauty and returns aren't mutually exclusive. Through exceptional craftsmanship, architectural character, and total transparency, we're redefining London real estate expectations.

Contact

Dexters

New Homes South

020 8545 8581

Newhomessouth@dexters.co.uk

