

## Crimscott Street, SE1

### £1,095,000

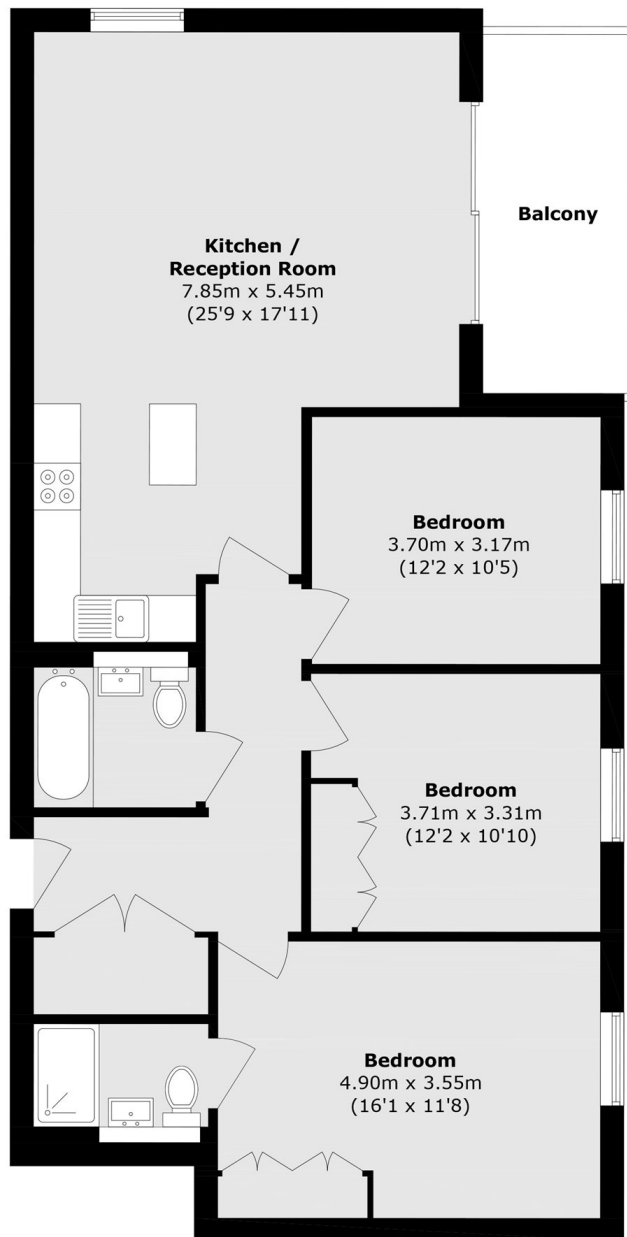
Print Makers, a limited collection of apartments located in vibrant Bermondsey with exceptional views of London. Voted one of the best places to live in the capital, these apartments offer an opportunity to experience a buzzing lifestyle with an easy commute.

Close to Borough Market, Bermondsey Street and London Bridge there are endless ways to fill your leisure time. With Canary Wharf only 20 minutes away and the City within walking distance, this is the perfect location for an exciting London life.

### Features

- 10 minutes to London Bridge Station
- Private balconies
- Access to shared terrace
- Ready to move in now
- £0 ground rent
- Integrated appliances

# Crimscott Street, London, SE1



## Thid Floor

Total area (approx.): 99.1 sq. m (1066.7 sq. ft)  
Balcony area (approx.): 8.7 sq. m (93.6 sq. ft)