



Avery Walk, SW11

£1,400,000

Stamp Duty Contribution Paid By Developer - Subject To Conditions

A three bedroom, two bathroom freehold mews home with allocated parking, located just off of Clapham Common Northside on Stormont Road. Avery Walk has been designed by award-winning developer Fruition Properties. Each home includes a rooftop terrace with far reaching views, taking in some of the capital's most iconic buildings including The Shard.

** Please note, some additional photographs from other homes within the same development have been used **

Features

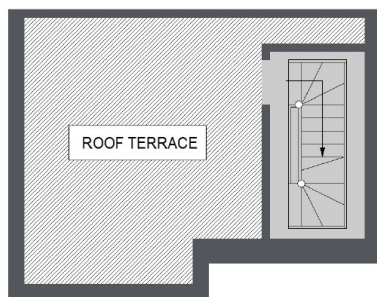
- Private Mews Development
- Allocated Off Street Parking
- Rooftop Terrace
- Expansive Living Spaces
- Three Bedrooms
- Two Bathrooms
- Exceptional Views
- High Specification



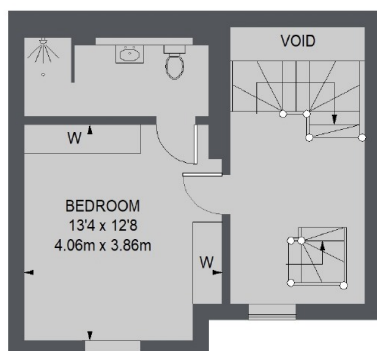
Avery Walk, SW11



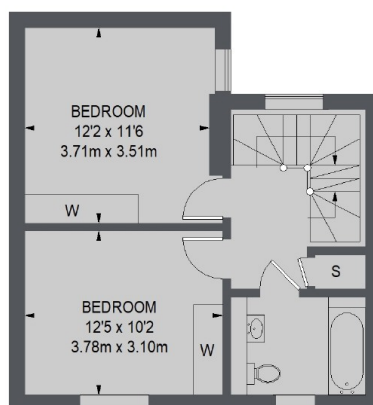
Avery Walk, Battersea, SW11



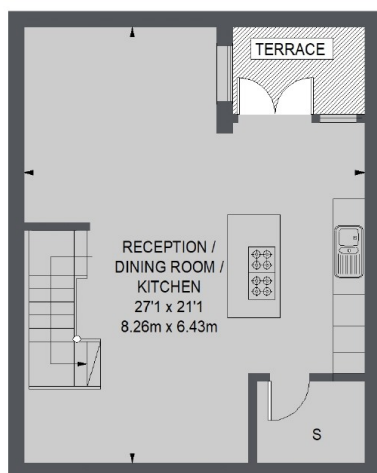
ROOF TERRACE



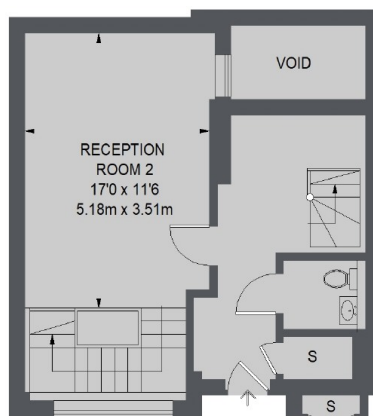
SECOND FLOOR



FIRST FLOOR



LOWER GROUND FLOOR



GROUND FLOOR

**TOTAL APPROX. FLOOR AREA
(EXCLUDING VOID)**
1741 SQ. FT. (161.77 SQ. M.)