



Cotton Row, SW11

£520,000

Waterview

A lovely two double bedroom apartment set overlooking beautiful communal gardens within this secure gated development by The Thames at Battersea.

Prices Court is located next to The Thames towpath within a mile of Clapham Junction and Wandsworth Town stations.





Accommodation is made up of entrance hall leading to an open plan living area with space for dining, and integrated kitchen with breakfast bar and Juliette balcony. The principal double bedroom has a range of built-in wardrobes and en-suite. There is a further double bedroom and family bathroom.

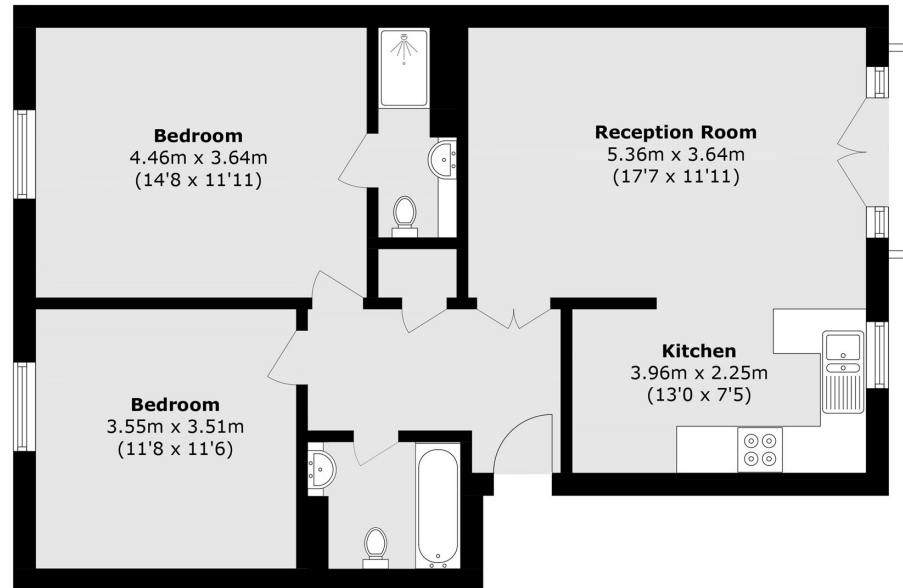
There is an excellent concierge service in the development and also an allocated parking space. Offered with no onward chain.

Features

- Ground Floor Apartment
- Two Double Bedrooms
- Two Bathrooms
- Secure Parking
- Concierge
- No Chain



Cotton Row, Battersea, SW11



Ground Floor

Total area (approx.): 74.4 sq. m (800.8 sq. ft)

Contact

To arrange a viewing call our office on the number below or visit our website.



Regulated
Estate Agent
and Letting Agent

Energy Rating: D. We aim to make our particulars both accurate and reliable. However they are not guaranteed; nor do they form part of an offer or contract. If you require clarification on any points then please contact us, especially if you're traveling some distance to view. Please note that appliances and heating systems have not been tested and therefore no warranties can be given as to their good working order.

