



Harbour Avenue, SW10

£1,650,000

Waterview

A stunning, spacious three bedroom apartment, located in the heart of this superb new Chelsea Island development. The property benefits from a high-spec open plan kitchen/reception room, excellent concierge service and resident's gym.

Chelsea Island is an exclusive development located next to the River Thames, Imperial Wharf railway station and river boats to the city are moments away.





Accommodation is made up of a beautiful open plan living space incorporating a stylish contemporary kitchen, dining area and living room with wooden floors and access to a large balcony.

There is a large principal bedroom with walk-in wardrobe and stylish en-suite. The principal bedroom also has access to one of the two balconies. There are also two further spacious doubles, both with balcony access and modern family bathroom. This apartment also comes with a secure allocated parking space.

The development has the benefits of fantastic 24 hour concierge, a well equipped residents only gym and landscaped communal roof garden.

Features

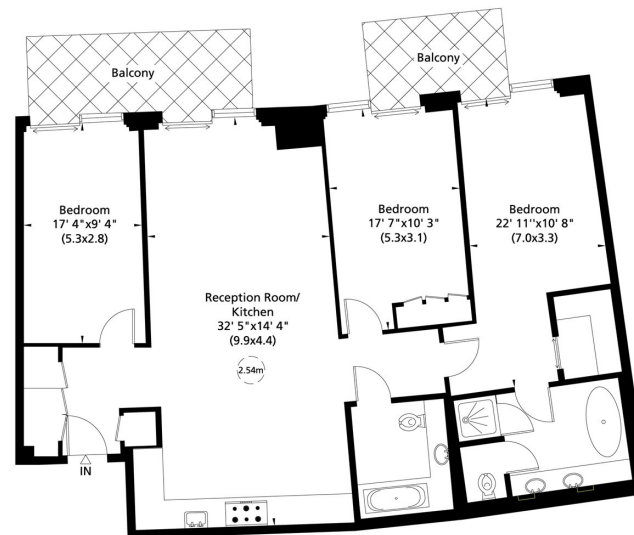
New Build Apartment
Three Double Bedrooms
Modern
Residents Gym
Rooftop Communal
Gardens
24-Hour Concierge



Harbour Avenue, Chelsea Harbour, SW10

Gross Internal Area: 133 Sq. metres
1435 Sq. feet

Balconies Area: 18 Sq. metres
191 Sq. feet



First Floor

Not to scale, for guidance only and must not be relied upon as a statement of fact. All measurements and areas are approximate only (and have been prepared in accordance with the current edition of the RICS Code of Measuring Practice).

Contact

To arrange a viewing call our office on the number below or visit our website.



Energy Rating: B. We aim to make our particulars both accurate and reliable. However they are not guaranteed; nor do they form part of an offer or contract. If you require clarification on any points then please contact us, especially if you're traveling some distance to view. Please note that appliances and heating systems have not been tested and therefore no warranties can be given as to their good working order.

