



Cheltenham Road, SE15

£650,000

Located on the first floor of this charming Victorian building, is this good size three bedroom maisonette, located just a short walk away from the open green spaces of Peckham Rye park. The property also benefits from having south west facing garden and a share of freehold.

The open spaces of Peckham Rye Park are on your door step with Nunhead and East Dulwich's town centres both within easy reach, providing an array of shops, restaurants and bars. Frequent rail links can be found from Nunhead and Peckham Rye stations.

Features

- First Floor Maisonette
- Three Bedrooms
- Eat In Kitchen
- South West Facing Garden
- Over 800 Sq/Ft
- Share Of Freehold

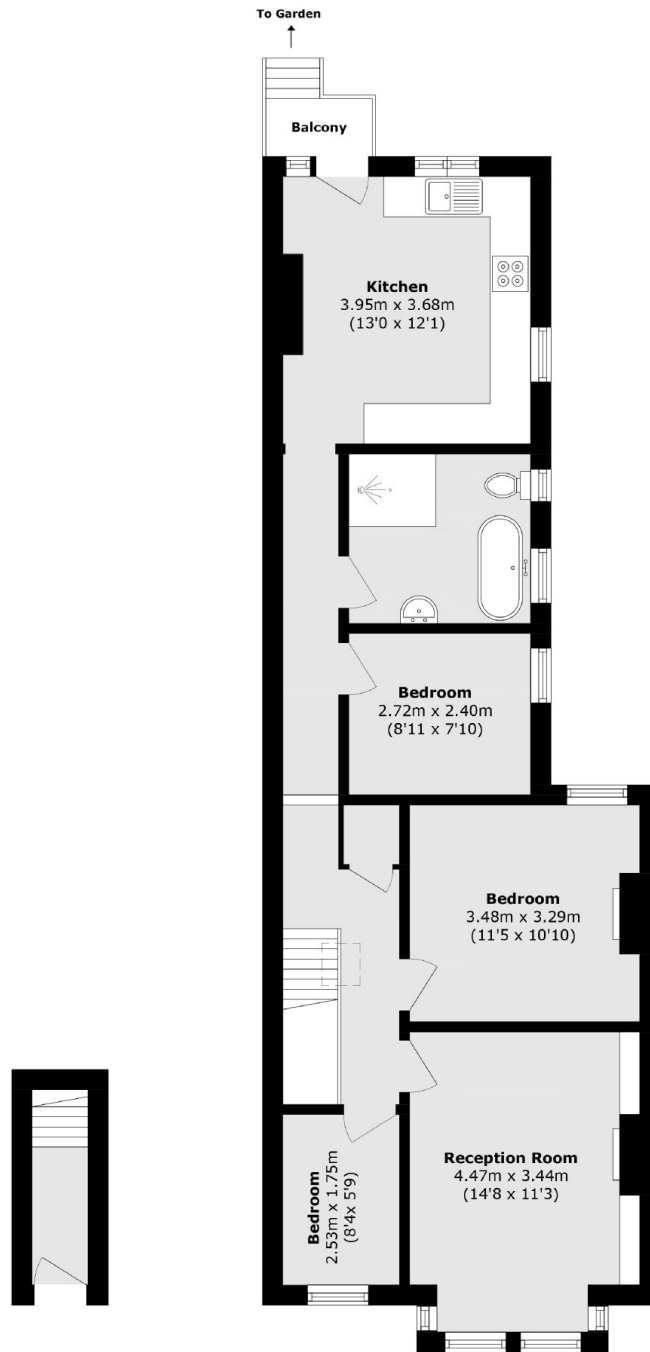


Cheltenham Road, SE15

This delightful first-floor maisonette seamlessly combines space, comfort, and convenience. Boasting three well-proportioned bedrooms, it offers plenty of room for family living or working from home. The recently renovated eat-in kitchen is spacious and well-appointed, featuring ample cupboard space, and provides direct access via steps to a beautifully maintained south-west facing garden. This tranquil outdoor space is perfect for relaxation or entertaining, with stunning views overlooking the Aquarius Golf Course. The separate living room is filled with natural light, highlighted by a charming bay window with shutters. The large bathroom features a roll-top bathtub and a separate shower, offering a luxurious touch. Additional benefits include a brand-new boiler, original wooden floors, and double-glazed windows throughout, enhancing both comfort and efficiency.



Cheltenham Road, London, SE15



Ground Floor

First Floor

Total area (approx.): 76.1 sq. m (819.1 sq. ft)

Balcony area (approx.): 1.5 sq. m (16.1 sq. ft)

Dexters

Peckham Rye
2 Barry Parade
Barry Road
London

Sales
020 8742 4146

Energy Rating: C. We aim to make our particulars both accurate and reliable. However they are not guaranteed; nor do they form part of an offer or contract. If you require clarification on any points then please contact us, especially if you're traveling some distance to view. Please note that appliances and heating systems have not been tested and therefore no warranties can be given as to their good working order.

 **RICS** | Regulated
Estate Agent
and Letting Agent

[dexters.co.uk](https://www.dexters.co.uk)