



Marsden Road, SE15

£700,000

A delightful two-bedroom Victorian conversion flat located on the sought-after Marsden Road, SE15. This beautifully presented home offers a perfect blend of period features and modern comfort, with the added benefit of owning a share of the freehold.

Marsden Road is perfectly placed for both Lordship Lane and Bellenden Road for their array of independent shops bars and restaurants. Goose Green and Peckham Rye park offer green open spaces, whilst frequent rail links can be found via Peckham Rye for the overground or East Dulwich for direct links to London Bridge.

Features

- Share Of Freehold
- Victorian Conversion
- Open Plan Living
- Excellent Location
- Two Bedrooms
- Character Features



Marsden Road, SE15

Upon entering, you are welcomed into a bright and spacious double bedroom at the front of the property, featuring a classic character bay window and high ceilings, which perfectly reflect the charm of the Victorian era. The room is flooded with natural light, creating a peaceful retreat.

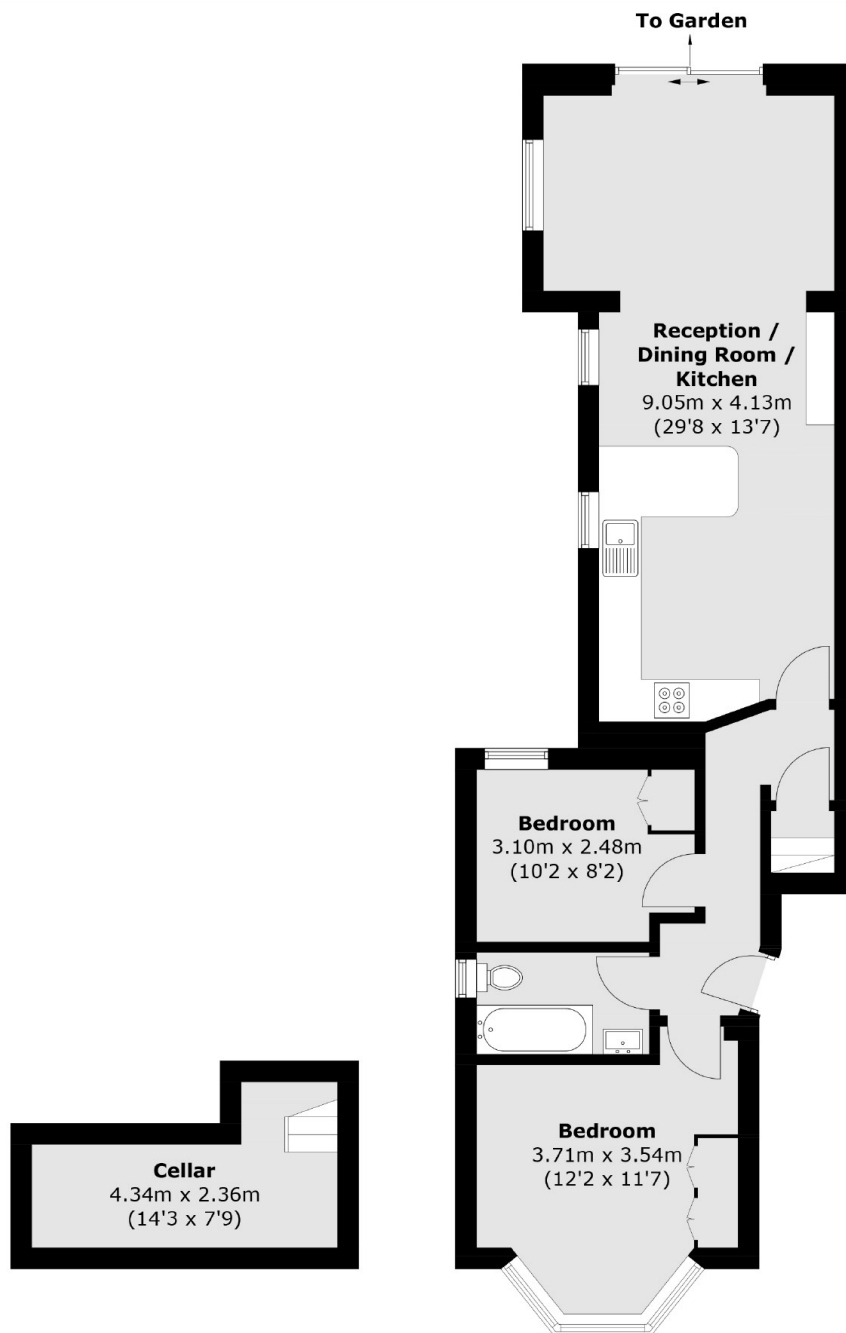
A family-sized bathroom lies just off the hallway and then a further double bedroom provides a quiet space with a window overlooking the side return.

The heart of this home is the open-plan kitchen and living room, which has been thoughtfully extended to provide a spacious, light-filled area perfect for both entertaining and day-to-day living. With ample space for dining and lounging, this room seamlessly flows out to a lovely, healthy garden, perfect for enjoying the outdoors and alfresco dining.

Additional features of this property include a handy cellar for extra storage.



Marsden Road, London, SE15



Basement

Ground Floor

Total area (approx.): 72.3 sq. m (778.2 sq. ft)

Dexters

Peckham Rye
2 Barry Parade
Barry Road
London
Sales
020 8742 4146

Energy Rating: C. We aim to make our particulars both accurate and reliable. However they are not guaranteed; nor do they form part of an offer or contract. If you require clarification on any points then please contact us, especially if you're traveling some distance to view. Please note that appliances and heating systems have not been tested and therefore no warranties can be given as to their good working order.

 **RICS** | Regulated
Estate Agent
and Letting Agent

[dexters.co.uk](https://www.dexters.co.uk)