



Dewar Street, SE15  
£799,950

**Dexters**



## Dewar Street, SE15

An impressive and tasteful Victorian corner house, located just moments away from Bellenden Road and Rye Lane, SE15.

We are proud to present this very unique property, located just moments away Bellenden Road and Peckham Rye, in the peaceful location of Dewar Street. Upon the entrance, on the corner between Troy Town and Dewar Street, you can instantly feel the design and uniqueness this property has to offer. The kitchen is very practical and colourful, with large surfaces, plenty of storage and SMEG appliances. It leads to a sunny private garden, decorated with wisteria. The living room is just as impressive, formerly hosting a Victorian confectionery shop, it benefits from floor to ceiling windows, frosted glass and an immense space with exposed bricks and a working fireplace. The first floor hosts two large bedrooms and a smaller room, currently used as a study, as well as a large family bathroom. Throughout the property wooden floorboards and stained glass windows are complimenting this beautiful semi detached property.

Peckham Rye train station is just a couple of minutes away, with trains to St Paul's in 13 minutes and to Farringdon in 15 minutes with Thameslink Services. Connections to Canary Wharf with change at Canada Water in 20 minutes.

### Features

- Excellent Location
- Semi Detached
- Chain Free
- Private Garden
- Victorian Shop Conversion
- Full Of Character





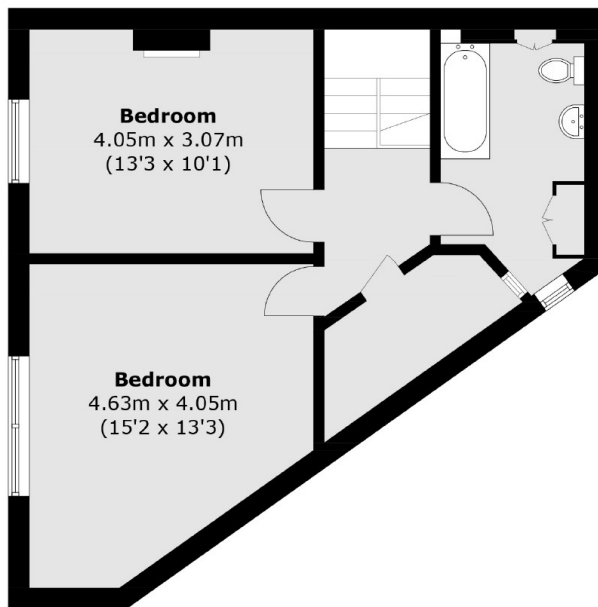




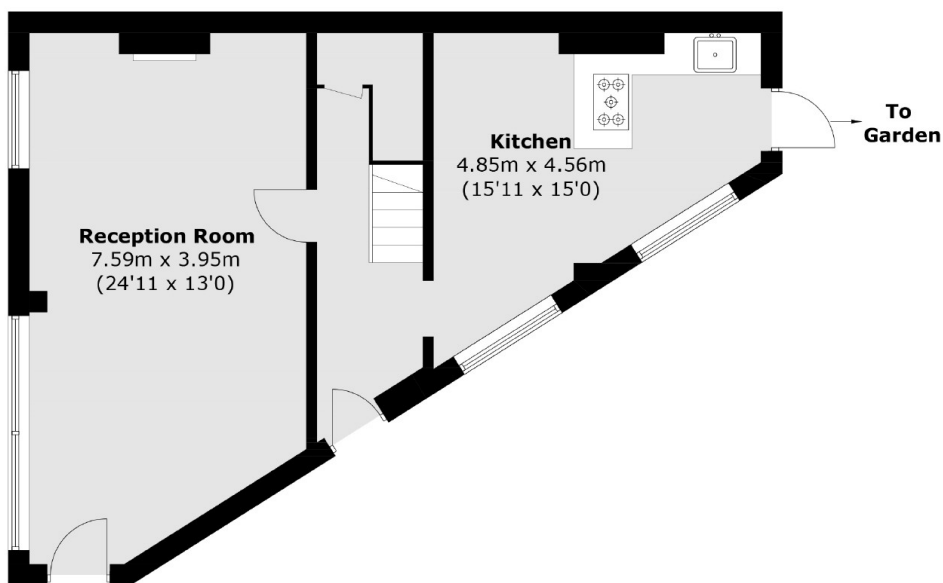




Dewar Street,  
London, SE15



**First Floor**



**Ground Floor**

Total area (approx.): 101.0 sq. m (1,087.2 sq. ft)