



Peckham Rye, SE15

£350,000

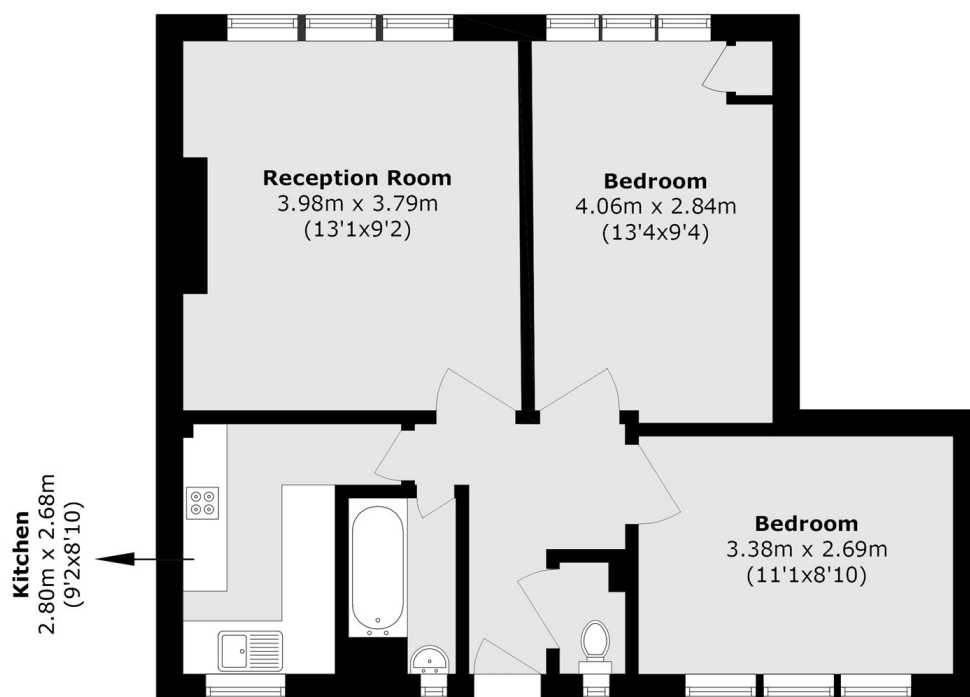
A two double bedroom top floor flat offering 572 square feet of living space in a fantastic location by Peckham Rye park.

Conveniently located and within easy reach of Peckham Rye & Nunhead stations. Lordship Lane & Nunhead Lane are both within close proximity, and offer an array of independent shops, cafés and restaurants.

Features

- Two Double Bedrooms
- Close To Peckham Rye Park
- Top Floor
- Views Of City Skyline
- Purpose Built
- 572 Square Foot

Peckham Rye, London, SE15



Total area (approx.): 53.2 sq. m (572.6 sq. ft)