



Borland Road, SE15

£280,000

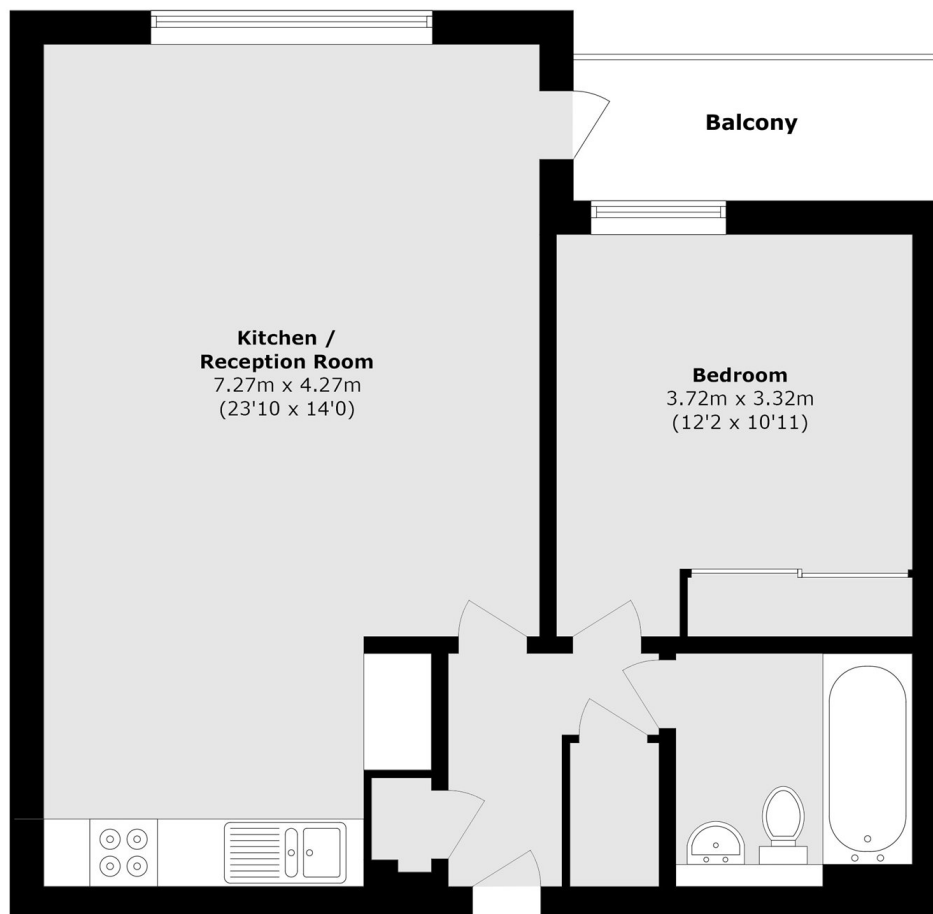
A well presented one double bedroom purpose built flat set within a small private development. Offered chain free with residents parking and communal gardens this is an ideal purchase for a first time buyer.

Borland Road is a quiet tree-lined street perfectly located for the extensive shopping facilities, bars and restaurants of Peckham and Nunhead station for trains to Victoria, Blackfriars, City Thameslink, Farringdon and St Pancreas.

Features

- Private Balcony
- Share Of Freehold
- Excellent Location
- One Double Bedroom
- Long Lease
- No Onward Chain

Borland Road, London, SE15



Total area (approx.): 52.0 sq. m (559.7 sq. ft)

Balcony area (approx.): 4.3 sq. m (46.2 sq. ft)