



Asylum Road, SE15
£850,000

Dexters



Asylum Road, SE15

Set within a beautifully converted school building, this unique and spacious three-bedroom property offers an abundance of charm and character as well as a private parking space and mature garden.

This property beautifully combines the building's original architectural charm with a high-end, contemporary finish throughout. The open-plan living area is both spacious and light-filled, creating an inviting environment perfect for everyday living and entertaining. The modern kitchen offers ample storage and modern appliances. There are three well-proportioned bedrooms, providing comfortable spaces for relaxation and storage. A standout feature of this property is the mezzanine floor, a versatile space that overlooks the main living area. This could serve as a home office, study, or reading nook. Outside, the good-sized private garden is an ideal spot for alfresco dining or relaxing, offering a perfect balance of indoor and outdoor living.

Queen's Road Peckham is just a short walk away and provides frequent rail links to London Bridge and London Overground services to Clapham Junction, Canada Water, Shoreditch and Dalston. There are frequent bus services to Central London from Old Kent Road. The green spaces of Peckham Rye, Burgess Park and Telegraph Hill are all within close proximity.

Features

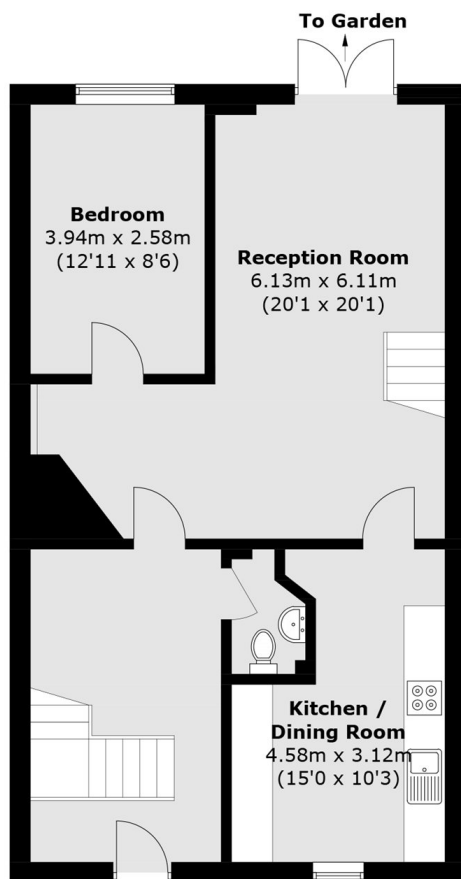
- School Conversion
- Private Parking space
- Modern Kitchen
- Mezzanine Floor
- Private Garden
- 1369 Square Foot



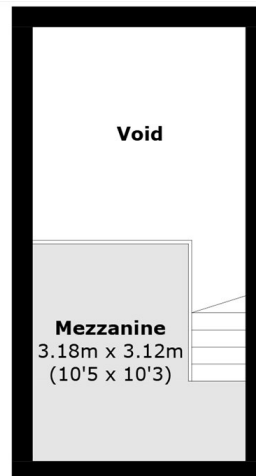




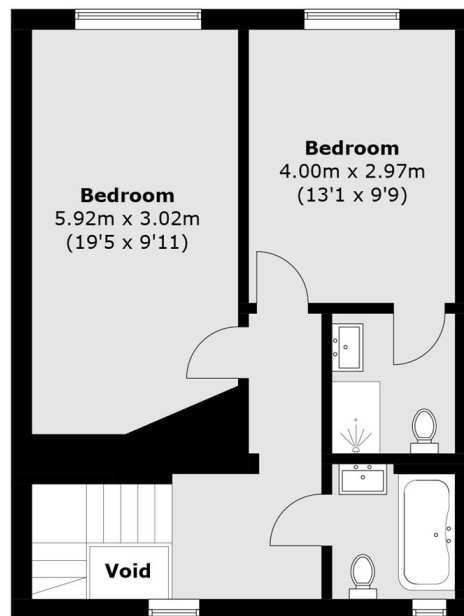
Asylum Road, London, SE15



Ground Floor



Mezzanine



First Floor

Total area (approx.): 127.2 sq. m (1,369.2 sq. ft)
(Including Mezzanine & Excluding Void)