



## Nunhead Lane, SE15

£635,000

Set within the sought after Tanswell Court and overlooking the open greenery of Nunhead Green, this distinctive split level home offers approximately 950 sq ft of well planned living space and the rare benefit of being a maisonette with a front garden.

Nunhead Lane is a sought location perfectly placed for the open space of Peckham Rye Common. Both Peckham Rye and Nunhead train stations are within walking distance providing overground connections to London Bridge, Blackfriars and the City. The amenities of Nunhead Lane are on your doorstep including a bakery, butchers, coffee shops and restaurants.

### Features

- Excellent Location
- 950 Square Feet
- Split Level
- Maisonette
- Plenty Of Storage
- Private Balcony

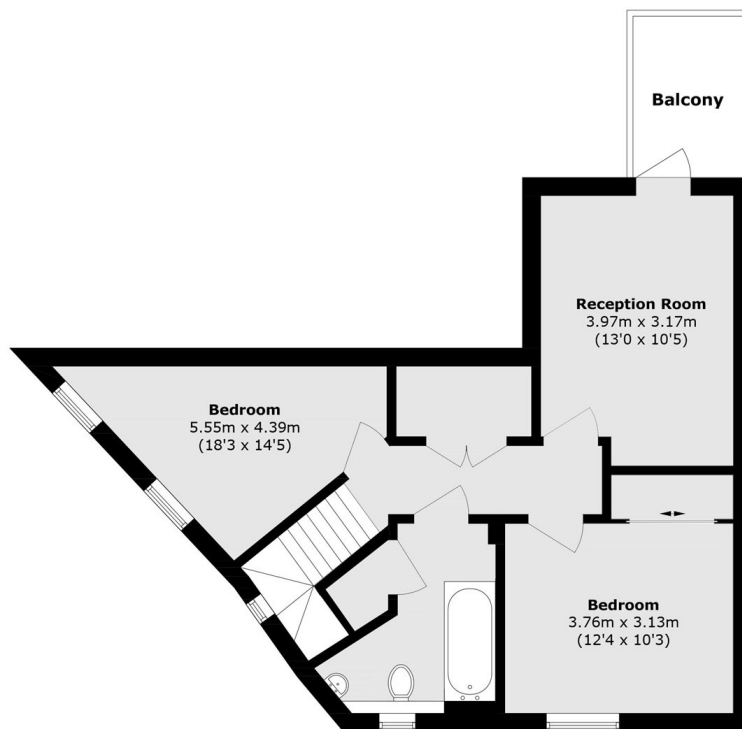


## Nunhead Lane, SE15

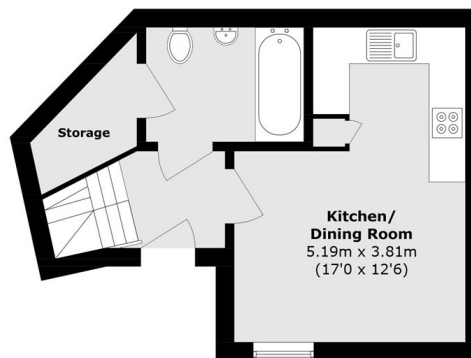
The property is arranged over two levels, creating a clear separation between living and sleeping accommodation. The ground floor features a generous kitchen/dining room, ideal for both everyday living and entertaining, complemented by a well placed bathroom and an excellent dedicated storage room. On the first floor, the accommodation comprises a bright and spacious reception room with direct access to a private balcony. There are two well-proportioned bedrooms along with a further bathroom serving this level.



# Nunhead Lane, London, SE15



**First Floor**



**Ground Floor**

Total area (approx.): 88.3 sq. m (950.4 sq. ft)

Balcony area (approx.): 4.9 sq. m (52.7 sq. ft)