



## Nunhead Lane, SE15

£525,000

A beautifully refurbished two double bedroom apartment in Tyrells Court on Nunhead Lane only a stones throw away from Peckham Rye and the amenities of Nunhead Lane.

Nunhead Lane is a sought after location perfectly placed for the open space of Peckham Rye Common. Both Peckham Rye and Nunhead train stations are within walking distance providing overground connections to London Bridge, Blackfriars and the City. The amenities of Nunhead Lane are just down the road including a bakery, butchers, coffee shops and restaurants.

### Features

- Excellent Location
- Two Double Bedrooms
- Two Bathrooms
- Turn Key Condition
- Open Plan Living
- Great Transport Links



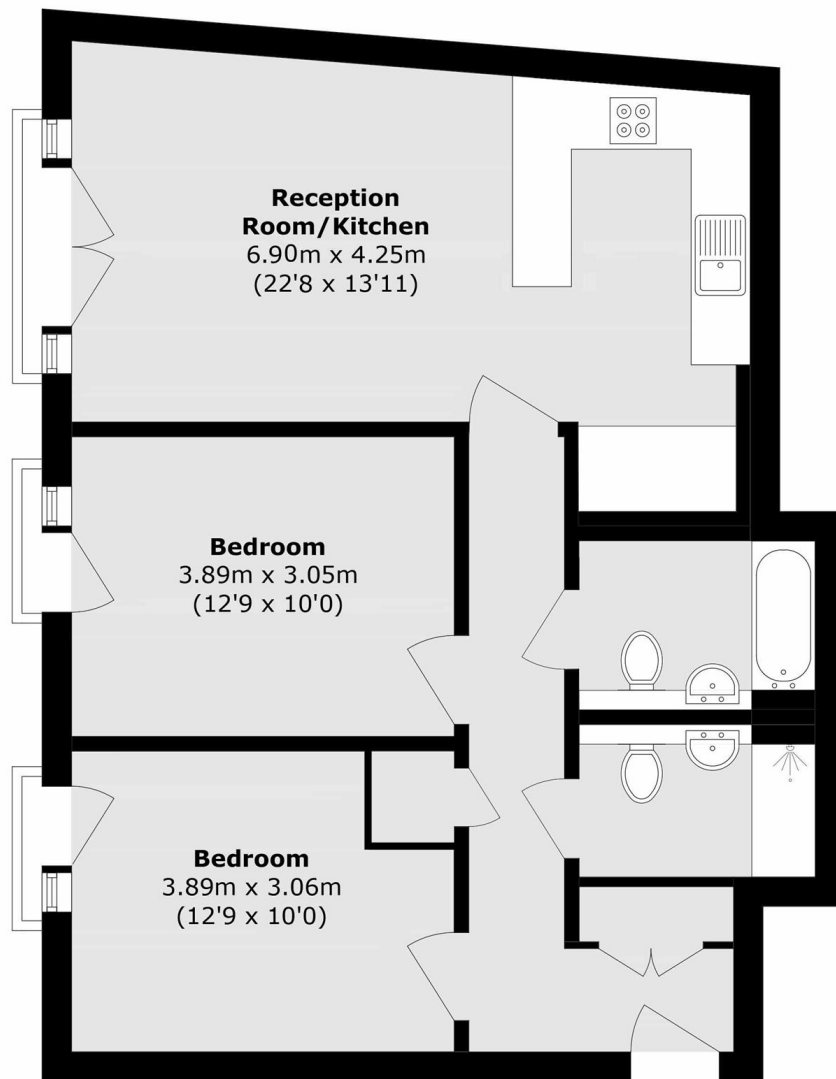
## Nunhead Lane, SE15

Located on the third floor, this property is perfect for modern living as it features an expansive open plan living area, seamlessly combining a bright and airy reception space with a fully fitted kitchen and a Juliette balcony. The kitchen includes integrated appliances, generous storage, and a stylish breakfast bar. Both double bedrooms are of excellent size, making the property well suited to professionals, sharers, or small families. This property also benefits from two bathrooms, both in excellent condition.





Nunhead Lane,  
London, SE15



Total area (approx.): 71.0 sq. m (764.2 sq. ft)

**Dexters**

Peckham Rye  
2 Barry Parade  
Barry Road  
London  
Sales  
020 8742 4146

Energy Rating: C. We aim to make our particulars both accurate and reliable. However they are not guaranteed; nor do they form part of an offer or contract. If you require clarification on any points then please contact us, especially if you're traveling some distance to view. Please note that appliances and heating systems have not been tested and therefore no warranties can be given as to their good working order.

 **RICS** | Regulated  
Estate Agent  
and Letting Agent

[dexters.co.uk](https://www.dexters.co.uk)