



Nunhead Grove, SE15

£475,000

A beautiful two bedroom top floor period conversion flat with open plan living, a demised loft space and a share of the freehold. Nunhead Grove is a prime location in the heart of Nunhead which is known for it's vibrant community feel.

Nunhead Grove is a sought after location perfectly placed for the open space of Peckham Rye Common. Both Peckham Rye and Nunhead train stations are within walking distance providing overground connections to London Bridge, Blackfriars and the City. The amenities of Nunhead Lane are on your doorstep including a bakery, butchers, coffee shops and restaurants.

Features

- Top Floor Conversion
- Share Of Freehold
- Planning In Place For Loft Conversion
- Open Plan Kitchen/Reception
- Two Bedrooms
- Excellent Location

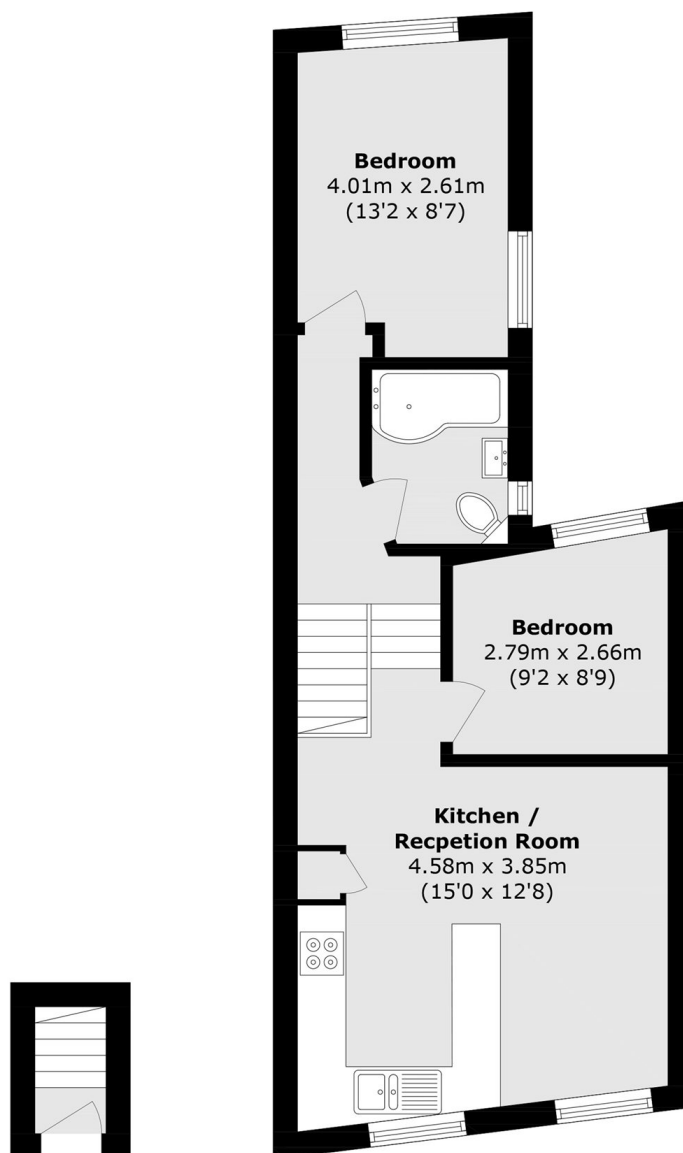


Nunhead Grove, SE15

Arranged around a split-level landing this bright and beautifully designed top-floor flat offers generous accommodation including an open plan kitchen/reception, two bedrooms served by a stylish bathroom/wc plus access to a large storage loft which has planning permission already in place to include two further bedrooms and a private roof terrace.



Nunhead Grove, London, SE15



Ground Floor

First Floor

Total area (approx.): 49.4 sq. m (531.7 sq. ft)

Dexters

Peckham Rye
2 Barry Parade
Barry Road
London
Sales
020 8742 4146

Energy Rating: D. We aim to make our particulars both accurate and reliable. However they are not guaranteed; nor do they form part of an offer or contract. If you require clarification on any points then please contact us, especially if you're traveling some distance to view. Please note that appliances and heating systems have not been tested and therefore no warranties can be given as to their good working order.

 **RICS** | Regulated
Estate Agent
and Letting Agent

[dexters.co.uk](https://www.dexters.co.uk)