



Chadwick Road, SE15
£1,200,000



Chadwick Road, SE15

Situated on the ever-popular Chadwick Road, this beautifully arranged three bedroom end of terrace house offers generous proportions, modern open-plan living and a wonderfully sociable layout, perfect for family life and entertaining alike.

The ground floor has been thoughtfully opened up to create an impressive, light-filled kitchen/dining/family space extending the full length of the property. This expansive room forms the true heart of the home, seamlessly connecting cooking, dining and everyday living. The layout provides ample space for a large dining table and relaxed seating area, while doors open directly onto the south facing garden, creating an effortless indoor/outdoor flow. Practicality has been carefully considered, with a highly convenient downstairs shower room and separate utility room. Upstairs, the first floor provides three well-proportioned bedrooms. The principal bedroom spans the full width of the house, complemented by two further bedrooms. A family bathroom serves the upper floor.

Ideally located for accessing Bellenden Road, with its independent boutiques and cafés. With Peckham Rye Station (Zone 2) nearby, transport links to central London and beyond are easily accessible. Additionally, the area is blessed with green spaces, including Peckham Rye Park and Warwick Gardens.

Features

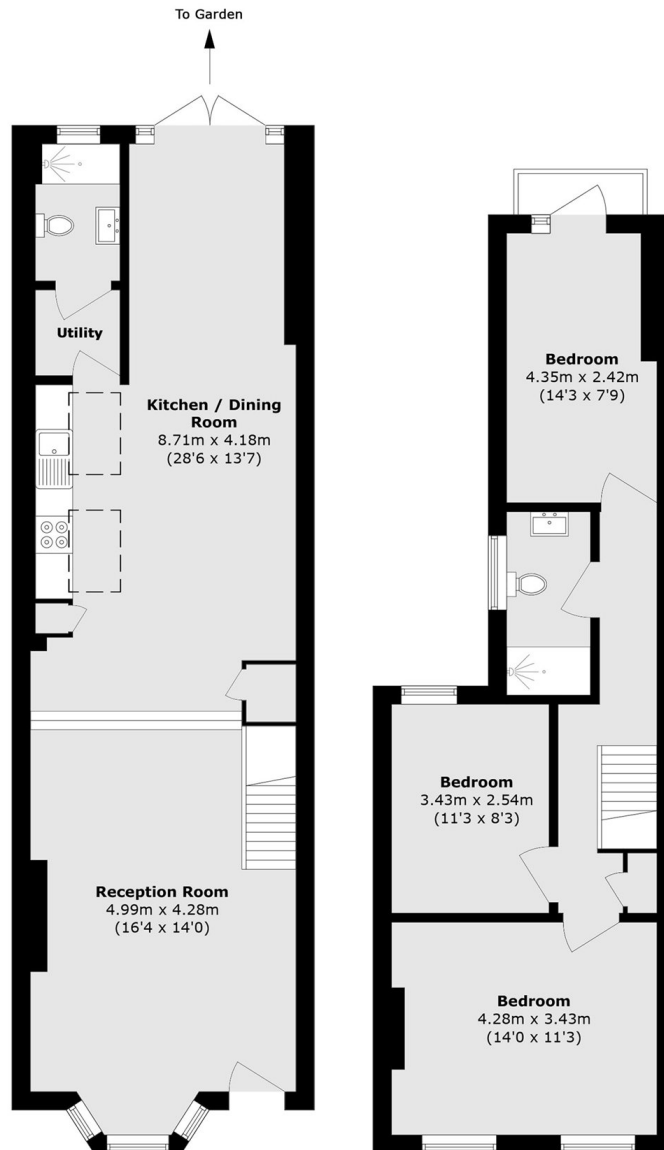
- End Of Terrace
- South Facing Garden
- Open Plan Living
- Three Double Bedrooms
- Excellent Location
- Utility Room







Chadwick Road, London, SE15



Ground Floor

First Floor

Total area (approx.): 114.7 sq. m (1234.6 sq. ft)

Dexters

Peckham Rye
2 Barry Parade
Barry Road
London
Sales
020 8742 4146

Energy Rating: E. We aim to make our particulars both accurate and reliable. However they are not guaranteed; nor do they form part of an offer or contract. If you require clarification on any points then please contact us, especially if you're traveling some distance to view. Please note that appliances and heating systems have not been tested and therefore no warranties can be given as to their good working order.

 **RICS** | Regulated
Estate Agent
and Letting Agent

[dexters.co.uk](https://www.dexters.co.uk)