



Rye Hill Park, SE15

£450,000

A contemporary two double bedroom maisonette with fantastic views and a south-east facing private balcony, located in a quiet cul-de-sac within close proximity of Peckham Rye Park & Common.

Local amenities can be found in nearby Nunhead, Dulwich or Peckham centres, and there are many school and nursery options within a short walk. Transport links provided via multiple bus networks and rail links from Peckham Rye and Nunhead stations, with the Overground and rail network providing great access to central London.

Features

- Two Double Bedrooms
- Split Level
- Ready To Move In
- Excellent Location
- 738 Square Foot
- Semi Open Plan Living

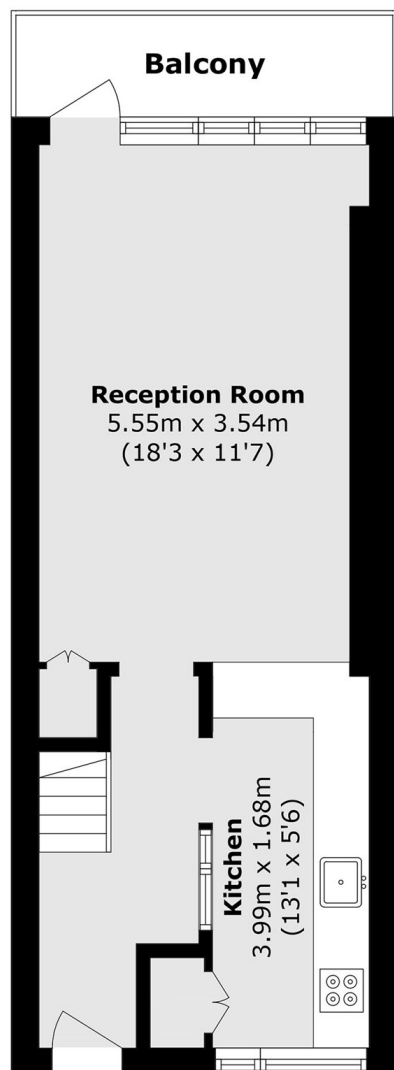


Rye Hill Park, SE15

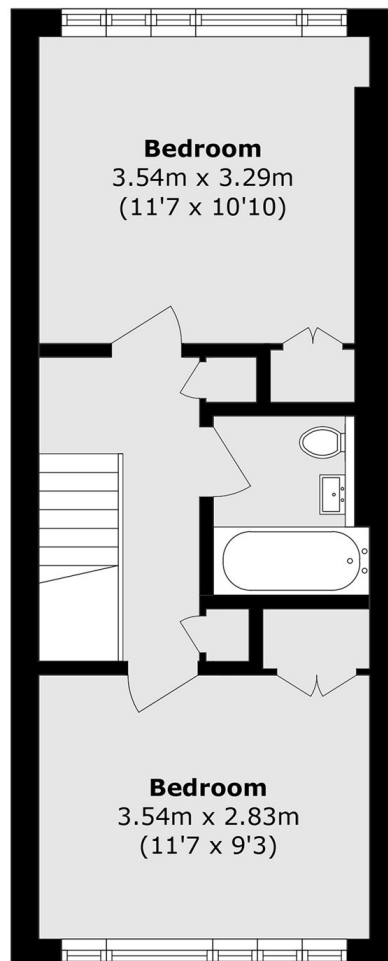
On the lower level, you are welcomed into an expansive, semi open-plan living area. The generous reception room provides ample space for relaxing and entertaining, with clearly defined areas for lounging and dining. The semi open-plan kitchen sits just off the main living space, creating an ideal layout for modern living while maintaining a sense of flow. From the reception room, doors lead directly onto a south-east facing balcony. Upstairs, the property continues to impress with two well-proportioned double bedrooms, both benefiting from built-in storage. These rooms are served by a well-appointed family bathroom.



Rye Hill Park, London, SE15



Second Floor



Third Floor

Total area (approx.): 68.6 sq. m (738.4 sq. ft)

Balcony area (approx.): 4.2 sq. m (45.2 sq. ft)