



## Turnham Road, SE4

### £450,000

A well presented two double bedroom apartment set within the popular Edgehill Lodge, SE4, offering balanced proportions, excellent natural light and a private balcony.

The property is in very good condition throughout and offers a well laid out interior extending to approximately 719 sq ft, with a bright reception room that opens directly onto the balcony, creating a seamless indoor outdoor feel.

### Features

- Two Double Bedrooms
- Apartment
- Private Balcony
- Excellent Conditions
- Overlooking Green Spaces
- Walking Distance To Crofton Park Station
- Cul de Sack Location



## Turnham Road, SE4

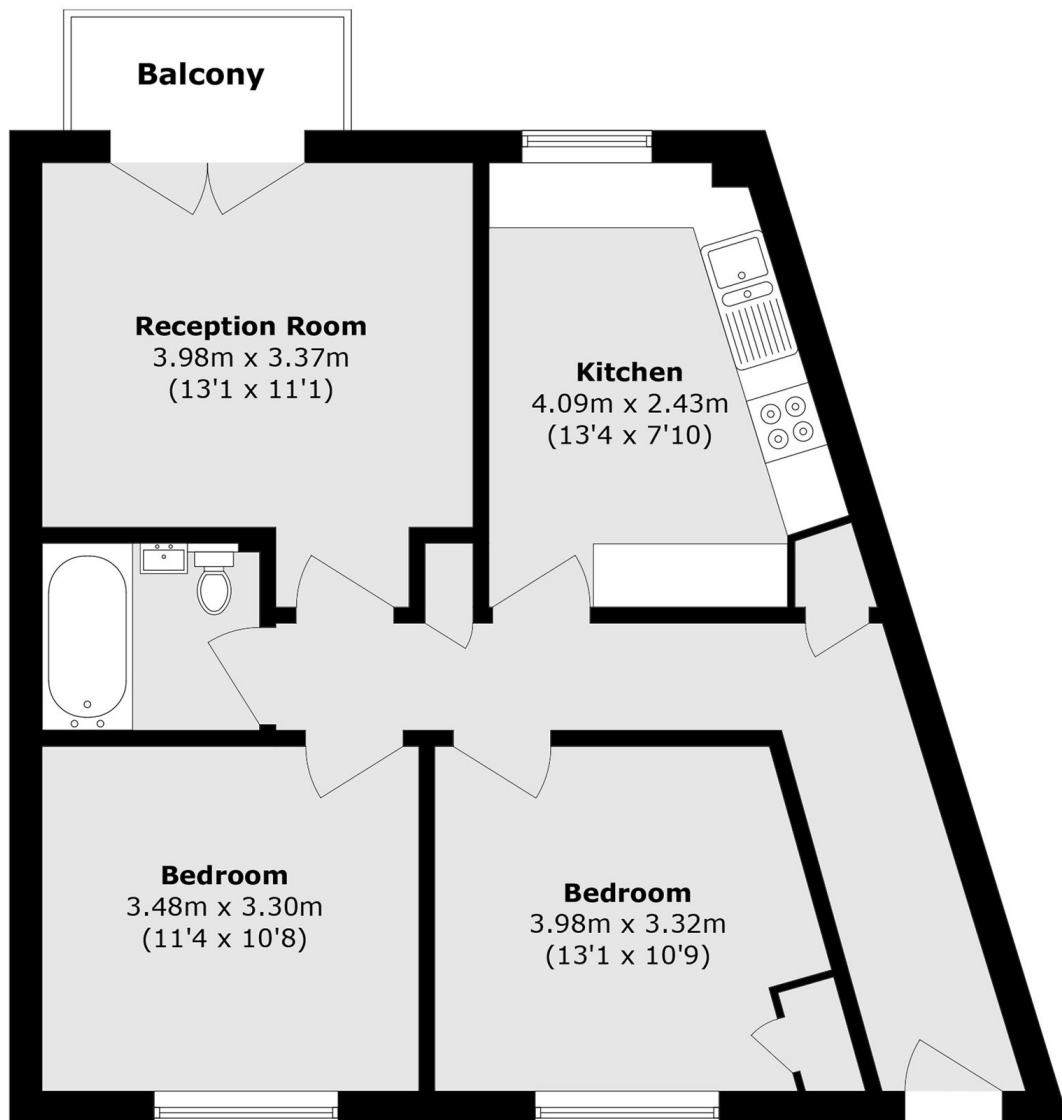
A key selling point of this flat is the presence of two genuinely large double bedrooms, both generous in size and ideal for sharers, young families or those working from home who require proper space rather than compromise. The separate kitchen is well maintained and functional, while the bathroom is neatly presented and in keeping with the overall condition of the property.

Edgehill Lodge is ideally positioned for access to a number of outstanding green spaces including Hilly Fields, Blythe Hill Fields, Peckham Rye Park and the charming Honor Oak Recreation Ground, offering open views, walking routes and outdoor leisure space right on your doorstep. The location also provides excellent transport links and local amenities nearby.





# Turnham Road, London, SE4



Total area (approx.): 66.8 sq. m (719.0 sq. ft)

Balcony area (approx.): 2.6 sq. m (27.9 sq. ft)

## Dexters

Peckham Rye  
2 Barry Parade  
Barry Road  
London  
Sales  
020 8742 4146

Energy Rating: TBC. We aim to make our particulars both accurate and reliable. However they are not guaranteed; nor do they form part of an offer or contract. If you require clarification on any points then please contact us, especially if you're traveling some distance to view. Please note that appliances and heating systems have not been tested and therefore no warranties can be given as to their good working order.

 **RICS** | Regulated  
Estate Agent  
and Letting Agent

[dexters.co.uk](https://www.dexters.co.uk)