



Cork Street, W1S

£3,400 Per week

Located in the heart of Mayfair and situated on the second floor of this new portered building, the apartment offers high specification living, three double bedrooms and three luxury bathrooms.

Burlington Gate is situated between Saville Row and Old Bond Street in the heart of Mayfair's Art Gallery district.

Features

- Three Double Bedrooms
- Three Bathrooms
- Secure Private Parking
- 24-Hour Concierge
- State-Of-The-Art Gymnasium
- Immaculately Furnished
- Lift



Cork Street, W1S

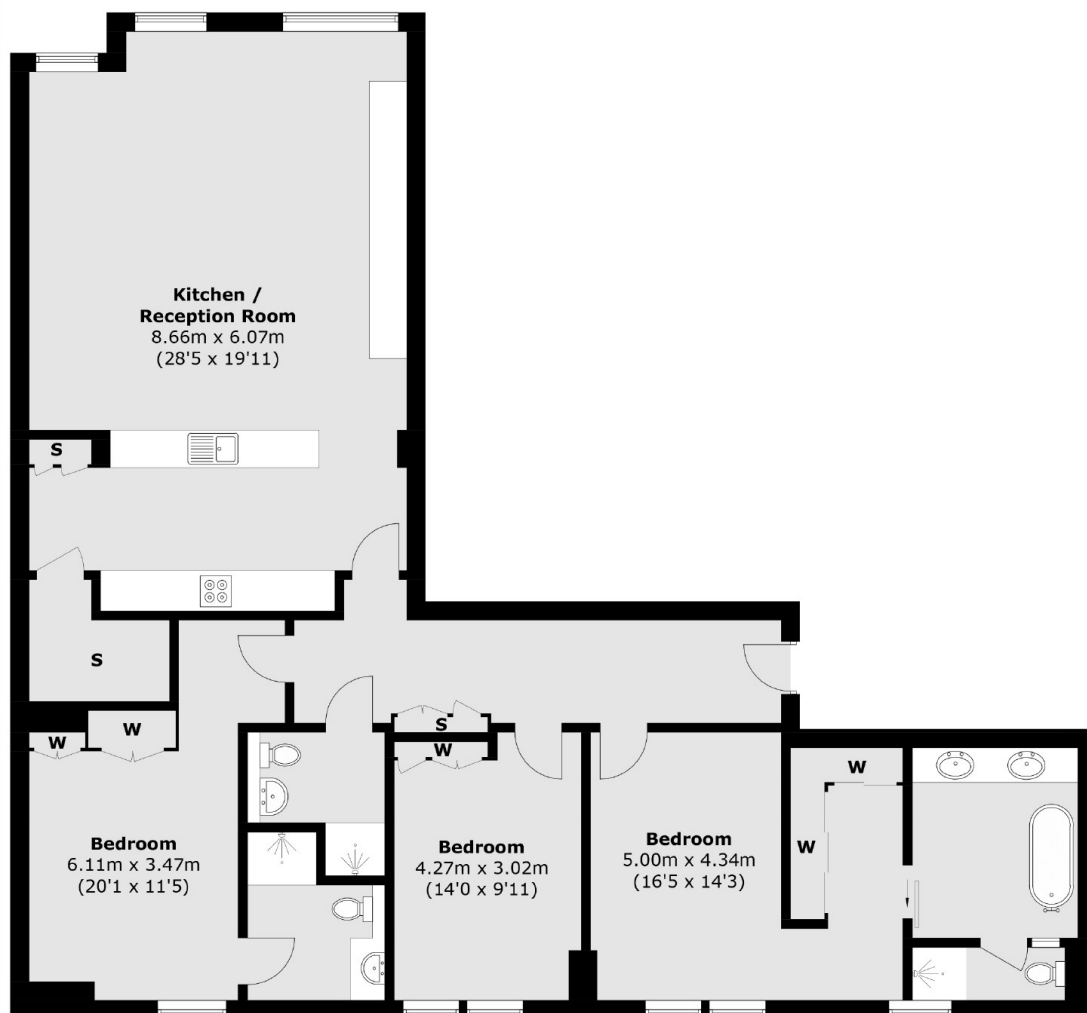
With wooden flooring throughout, this spacious apartment has an open plan kitchen and elegant reception room with dining area and separate utility room.

The property further consists of a main bedroom with en suite bathroom and dressing area, two additional double bedrooms, one with en suite shower room and family bathroom.

The spa and state-of-the-art gymnasium offers a 24-hr, air-conditioned fitness facility along with sauna and treatment room. In addition to the concierge service there is secure underground parking available for all residents.



Cork Street, London, W1S



Total area (approx.): 149.0 sq. m (1603.8 sq. ft)

Dexters

Wetherell
102 Mount Street
London
W1K 2TH
Lettings
020 7529 5588

Energy Rating: B. We aim to make our particulars both accurate and reliable. However they are not guaranteed; nor do they form part of an offer or contract. If you require clarification on any points then please contact us, especially if you're traveling some distance to view. Please note that appliances and heating systems have not been tested and therefore no warranties can be given as to their good working order.

 **RICS** | Regulated
Estate Agent
and Letting Agent

dexters.co.uk