



JERMYN STREET

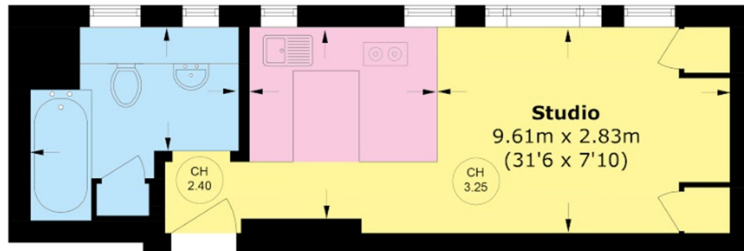
ST JAMES'S SW1Y



A CHARMING, FURNISHED STUDIO ON THE THIRD FLOOR WITH LIFT ACCESS AND ON SITE PORTER. THE PROPERTY COMPRISES AN OPEN PLAN KITCHEN AND SEPARATE BATHROOM.



The building is located in the centre of London's oldest district and is close to the many amenities of St. James's, Mayfair, Piccadilly and Soho. Piccadilly and Green Park are the nearest tube stations offering variety of train lines such as the Piccadilly, Jubilee and Victoria lines.



Second Floor

Total area (approx.): 26.8 sq. m (288.4 sq. ft)

FEATURES

- Well-Presented Studio
- Furnished
- Third Floor
- Lift Access
- Porter
- Excellent Location

Price: £550 Per week

We aim to make our particulars both accurate and reliable. However they are not guaranteed; nor do they form part of an offer or contract. If you require clarification on any points then please contact us, especially if you're traveling some distance to view. Please note that appliances and heating systems have not been tested and therefore no warranties can be given as to their working order. Energy Rating:



WETHERELL
MAYFAIR'S FINEST PROPERTIES

102 Mount Street • London • W1K 2TH
T: 020 7529 5588 E: rentals@wetherell.co.uk

wetherell.co.uk

NO ONE KNOWS MAYFAIR BETTER THAN WETHERELL