



# HILL STREET

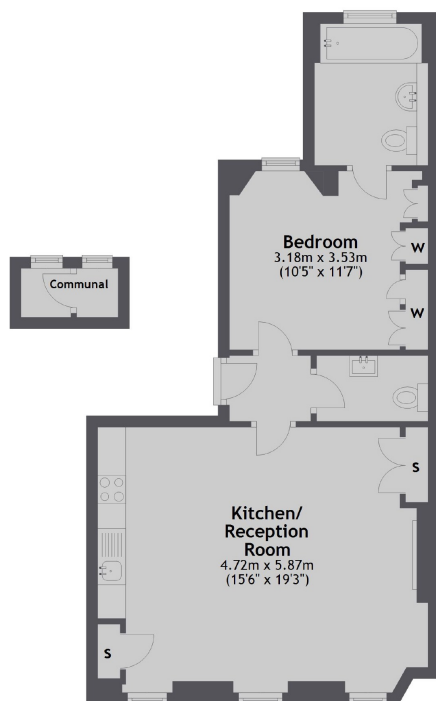
## MAYFAIR W1J



A ONE BEDROOM, ONE BATHROOM APARTMENT ON THE SECOND FLOOR OF THIS RECENTLY REDEVELOPED GRADE II LISTED BUILDING IN THE HEART OF MAYFAIR.



## Second Floor



Main area: Approx. 49.6 sq. metres (534.3 sq. feet)  
Plus communal, approx. 0.7 sq. metres (7.4 sq. feet)

Part of the prestigious Berkeley Square Estate, the apartments at 7 Hill Street have been finished to the highest specification offering luxurious interior designed fully furnished accommodation to suit the most discerning tenants.

This impressive property has a reception room with a feature fireplace, original period features and a fully fitted open plan kitchen. The en suite double bedroom is located to the rear of the apartment and has a range of fitted cedarwood wardrobes.

## FEATURES

- Recently Redeveloped
- One Double Bedroom
- One Bathroom
- Comfort Cooling
- Guest Cloakroom
- Utility Room

Price: £795 Per week

We aim to make our particulars both accurate and reliable. However they are not guaranteed; nor do they form part of an offer or contract. If you require clarification on any points then please contact us, especially if you're traveling some distance to view. Please note that appliances and heating systems have not been tested and therefore no warranties can be given as to their working order. Energy Rating: D

The property is conveniently located close to Green Park and Bond Street tube stations as well as the open spaces of Green Park. The shops, boutiques, restaurants and hotels of Mayfair are amongst the finest in the capital.



**WETHERELL**  
MAYFAIR'S FINEST PROPERTIES

102 Mount Street • London • W1K 2TH  
T: 020 7529 5588 E: rentals@wetherell.co.uk

wetherell.co.uk

NO ONE KNOWS MAYFAIR BETTER THAN WETHERELL