



Penwortham Road, SW16

£2,300 Per calendar month

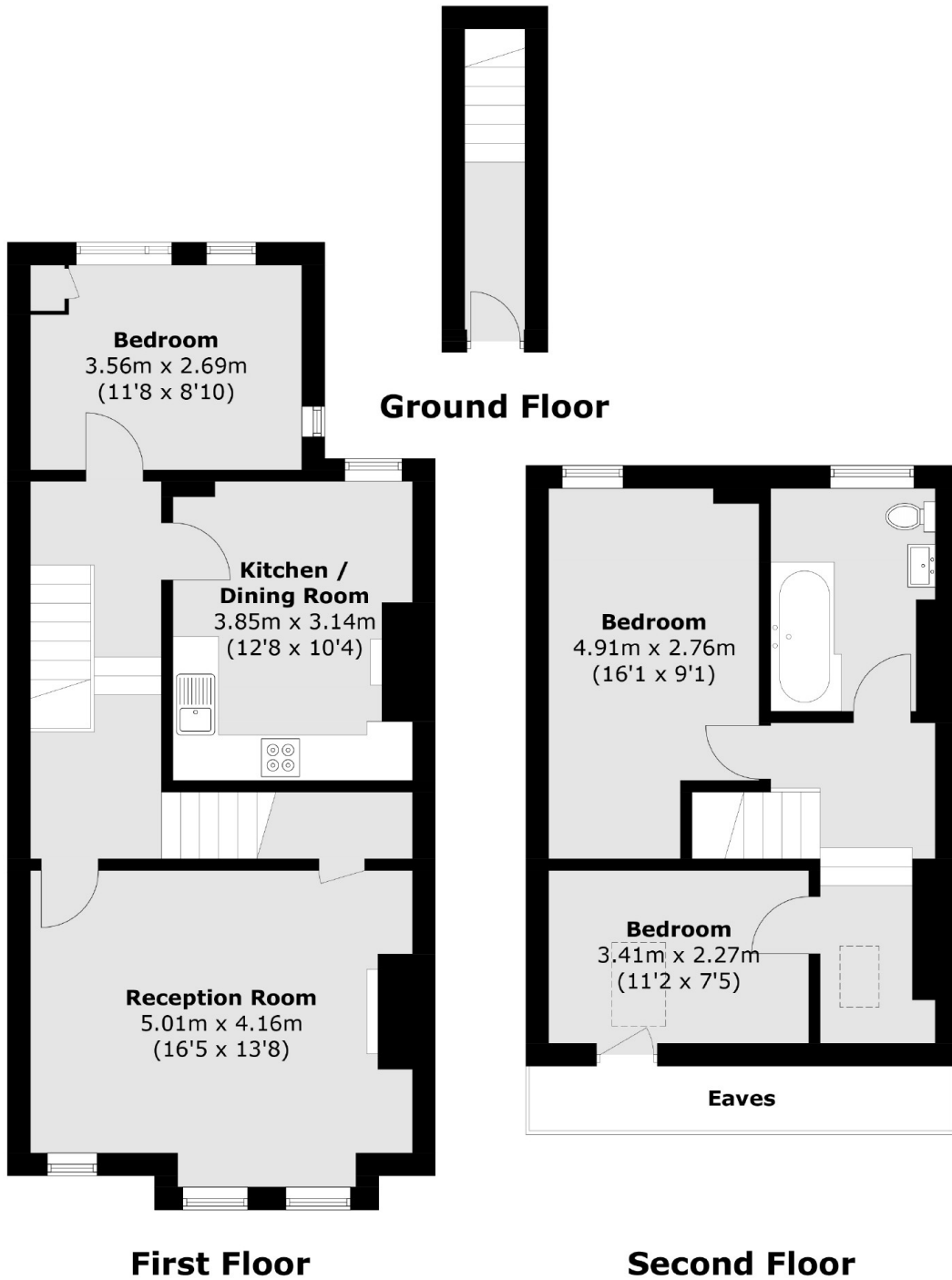
FAMILY OR TWO SHARERS ONLY. A recently refurbished first floor split level maisonette comprising of a modern eat in kitchen, large reception room, three double bedrooms and a modern bathroom.

Penwortham Road has a Furzedown location and is perfectly placed for a wide range of local amenities along Tooting High Road. Transport links can be found at Tooting Bec Underground (Northern Line) with the open spaces of Tooting Bec Common within easy reach.

Features

- Maisonette
- Three Double Bedrooms
- Separate Reception Room
- Eat in Kitchen
- Modern Fitted Bathroom
- Family or Two Sharers

Penwortham Road, London, SW16



Total area (approx.): 95.6 sq. m (1,028.9 sq. ft)
(Excluding Eaves)