



Longley Road, SW17

£525,000

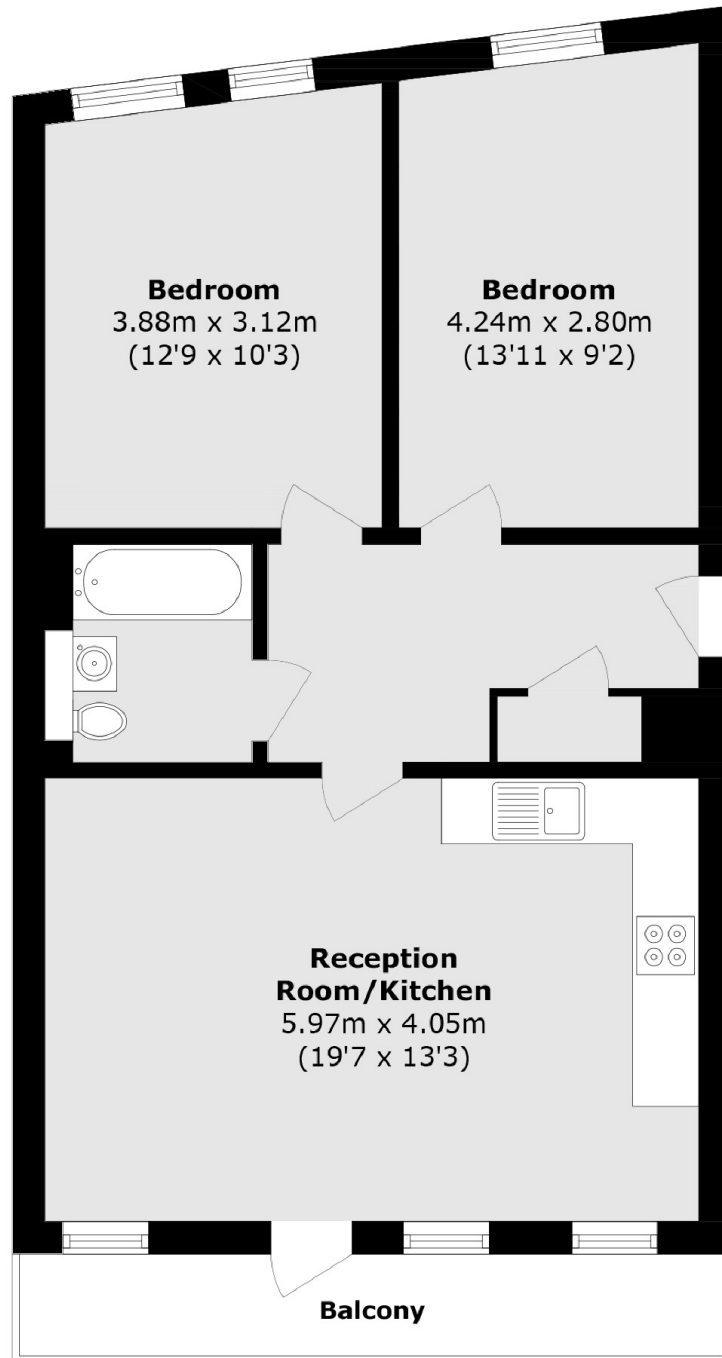
A truly exquisite modern apartment with superb proportions throughout opening onto a generous open-plan kitchen/reception room with a fitted kitchen and a comfortable seating and dining area opening onto a double with private balcony. Further accommodation includes a stylish three piece family bathroom and two double bedrooms. A contemporary and well maintained building, the property benefits from a secure gated entrance and communal grounds.

Longley Road is a conveniently located residential street with excellent access to the many shops, bars and restaurants of central Tooting, with easy access to Tooting Railway and Tooting Broadway Underground stations.

Features

- Two Double Bedrooms
- Private Balcony
- Communal Grounds
- Open-Plan Kitchen/Reception Room
- Convenient Location
- Stylish Apartment

Longley Road, London, SW17



Total area (approx.): 62.0 sq. m (667.3 sq. ft)

Balcony area (approx.): 5.9 sq. m (63.5 sq. ft)

Dexters

Tooting
48 Tooting High Street
London
SW17 0RG
Sales
020 8545 8582

Energy Rating: . We aim to make our particulars both accurate and reliable. However they are not guaranteed; nor do they form part of an offer or contract. If you require clarification on any points then please contact us, especially if you're traveling some distance to view. Please note that appliances and heating systems have not been tested and therefore no warranties can be given as to their good working order.

 **RICS** | Regulated
Estate Agent
and Letting Agent

[dexters.co.uk](https://www.dexters.co.uk)