



Noyna Road, SW17

£700,000

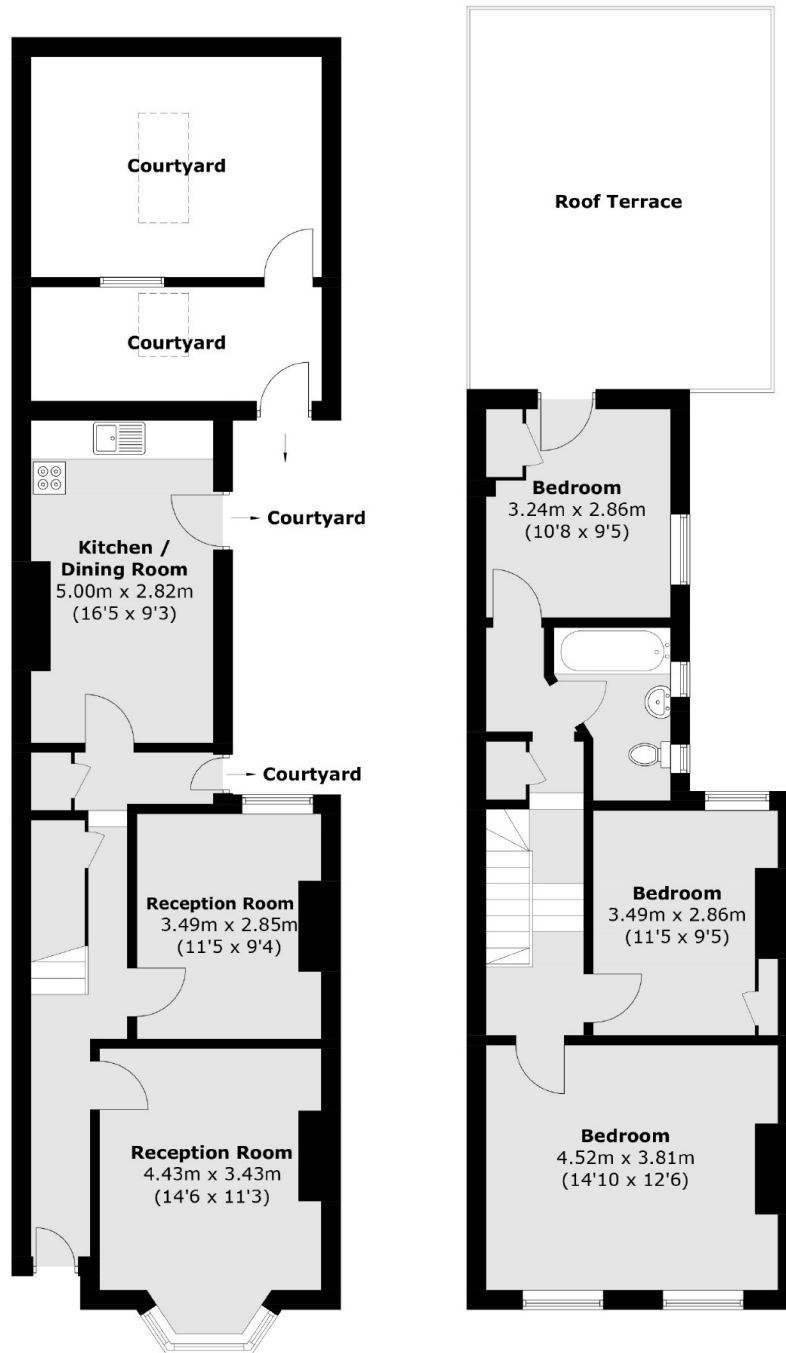
A rare mid terrace Victorian building on a prime road in Tooting Bec with superb scope for extending and further alterations (STPP). The property opens onto two generous reception rooms with a spacious kitchen at the rear and three generous double bedrooms and a family bathroom positioned over the first floor with a private terrace and a garden that has been converted into a garage/lockup.

Noyna Road is nestled between the green spaces of Tooting Bec and Wandsworth Common with an array of boutique cafés, bars & restaurants of Balham, Tooting and Northcote Road only a stones throw away.

Features

- Three Double Bedrooms
- Chain Free
- Potential to Extend (STPP)
- Blank Canvas
- Central Location
- Period Building

Noyna Road, London, SW17



Ground Floor

First Floor

Total area excluding courtyard (approx.): 102.8 sq. m (1,106.5 sq. ft)
Roof Terrace: 27.4 sq. m (294.9 sq. ft)