



## Ashbourne Road, CR4

### £625,000

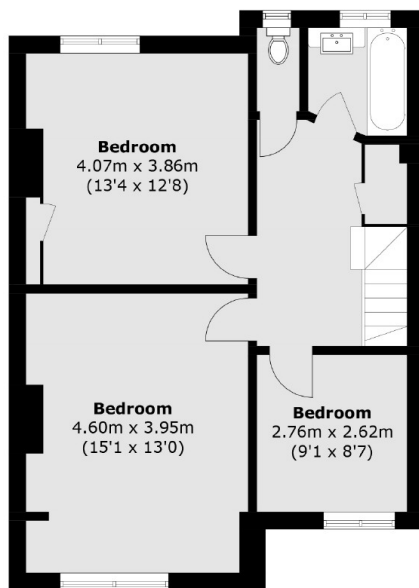
A sizeable three bedroom mid terrace home offering superb scope for alterations and extending (STPP). Current accommodation spans to just under 1,400 sqft and includes two reception rooms, a large kitchen, three bedrooms and a family bathroom. To the rear the property benefits for a larger than average garden.

Ashbourne Road is conveniently located for the many shops, bars and restaurants of central Tooting with the excellent transport links of Thameslink via Tooting Railway and Tooting Broadway Underground stations also within walking distance. The wide green open spaces of Figges Marsh are also nearby.

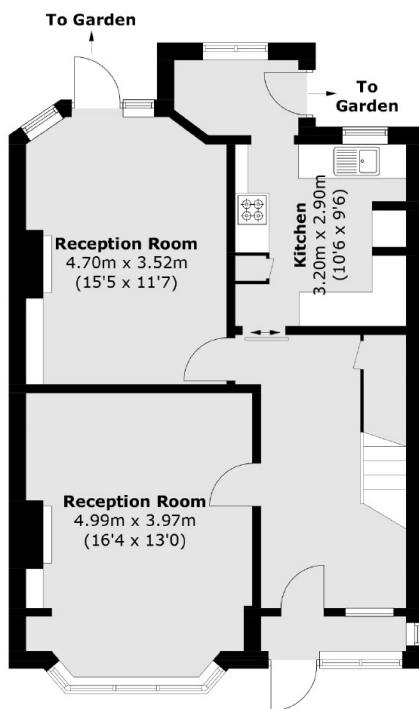
### Features

- Three Bedrooms
- Chain Free
- Large Garden
- Potential to Extend (STPP)
- Two Reception Room
- Freehold Home

# Ashbourne Road, Mitcham, CR4



**First Floor**



**Ground Floor**

Total area (approx.): 124.4 sq. m (1,339.0 sq. ft)