



Plough Lane, SW17

£550,000

A beautifully presented two double bedroom top floor apartment in this modern development with views over the London skyline. The property also benefits from an open-plan kitchen/reception room with built in air conditioning, two bathrooms, a private south facing balcony and long lease. This well sort after development is situated in the heart of Summerstown and is complete with 24 hour concierge and a private parking space.

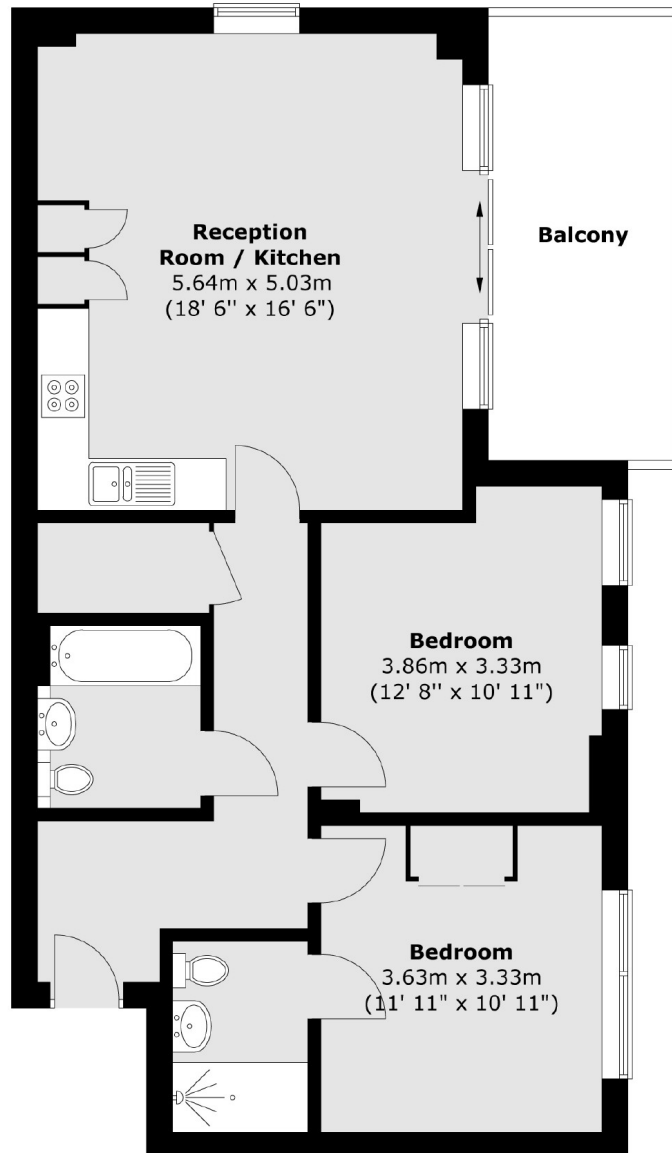
Ideally located within close proximity to Wimbledon, Tooting and Earlsfield town centres and their vast amenities, the property is well located for an eclectic mix of shops, bars and restaurants as well as the excellent transport links via Earlsfield & Tooting Broadway stations.

Features

- Two Double Bedrooms
- Two Bathrooms
- South Facing Private Balcony
- 24 Hour Concierge
- Private Parking Space
- Air Conditioning
- Lift Access

Plough Lane, London, SW17

Seventh Floor



Total area (approx.) : 75.6 sq. m (814 sq. ft)
Total balcony area (approx.) : 10.3 sq. m (110 sq. ft)

Dexters

Tooting
48 Tooting High Street
London
SW17 0RG
Sales
020 8545 8582

Energy Rating: B. We aim to make our particulars both accurate and reliable. However they are not guaranteed; nor do they form part of an offer or contract. If you require clarification on any points then please contact us, especially if you're traveling some distance to view. Please note that appliances and heating systems have not been tested and therefore no warranties can be given as to their good working order.

 **RICS** | Regulated
Estate Agent
and Letting Agent

[dexters.co.uk](https://www.dexters.co.uk)