



Seely Road, SW17

£299,950

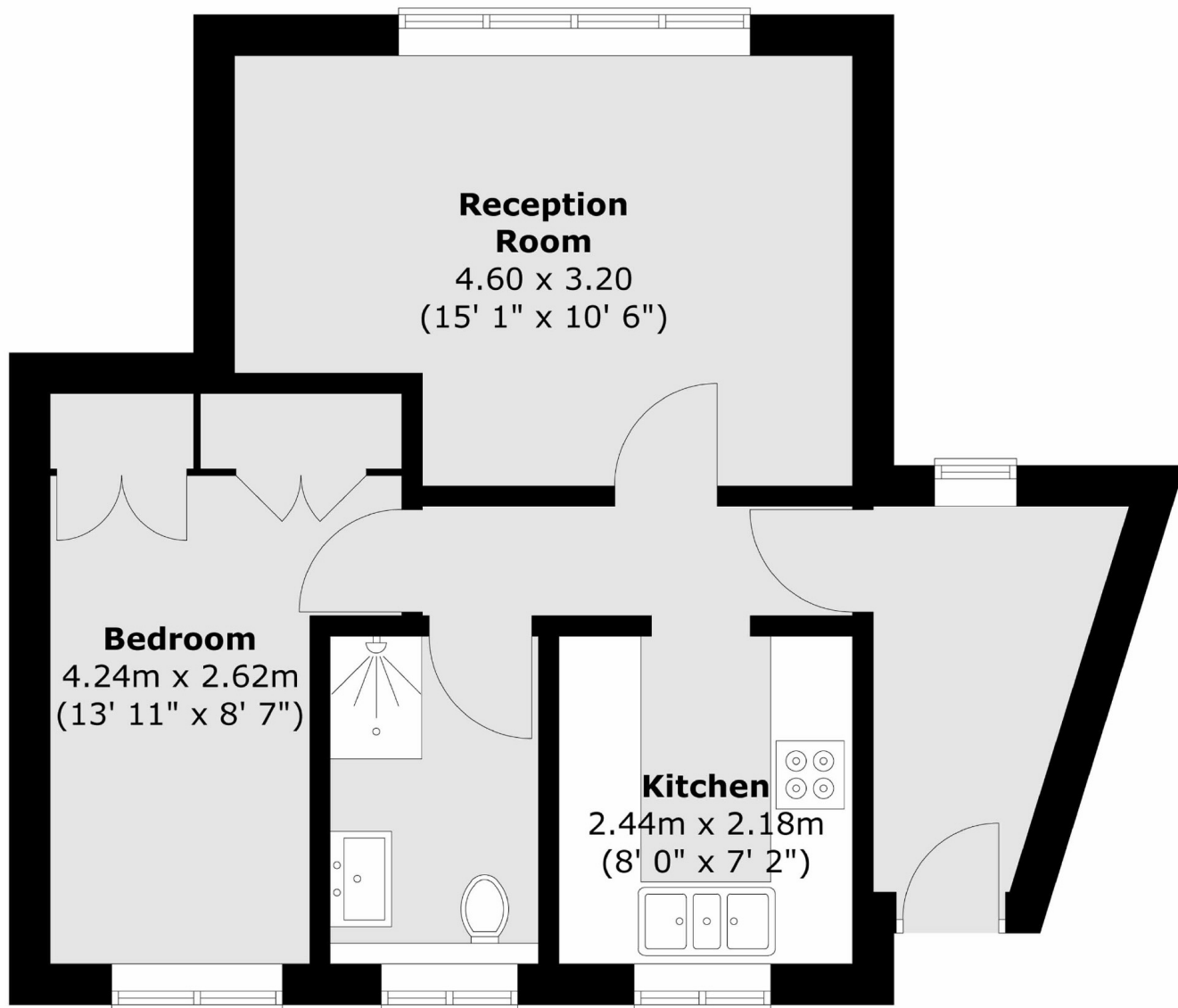
A charming and well presented one double bedroom maisonette in superb condition throughout with a generous footprint comprising a front reception room, a stylish kitchen, a double bedroom and a three piece family bathroom with a private low maintenance garden. Retaining it's own front door & entrance, the property has potential for off-street parking. *CGI Imagery

Seely Road is at the heart of the ABC roads in central Tooting, located very close to the many shops, bars and restaurants of Tooting High Street and sits on the doorstep of Furzedown Village with Tooting Railway & Broadway Underground stations nearby.

Features

- One Double Bedroom
- Own Front Door
- Private Garden
- Share of Freehold
- 999 Year Lease
- Turnkey Finish
- Quiet Residential Area

**Seely Road,
London, SW17**



Total area (approx.) : 41.6 sq. m (448 sq. ft)

Dexters

Tooting
48 Tooting High Street
London
SW17 ORG
Sales
020 8545 8582

Energy Rating: C. We aim to make our particulars both accurate and reliable. However they are not guaranteed; nor do they form part of an offer or contract. If you require clarification on any points then please contact us, especially if you're traveling some distance to view. Please note that appliances and heating systems have not been tested and therefore no warranties can be given as to their good working order.

 **RICS** | Regulated
Estate Agent
and Letting Agent

[dexters.co.uk](https://www.dexters.co.uk)