



Castle Mews, SW17

£685,000

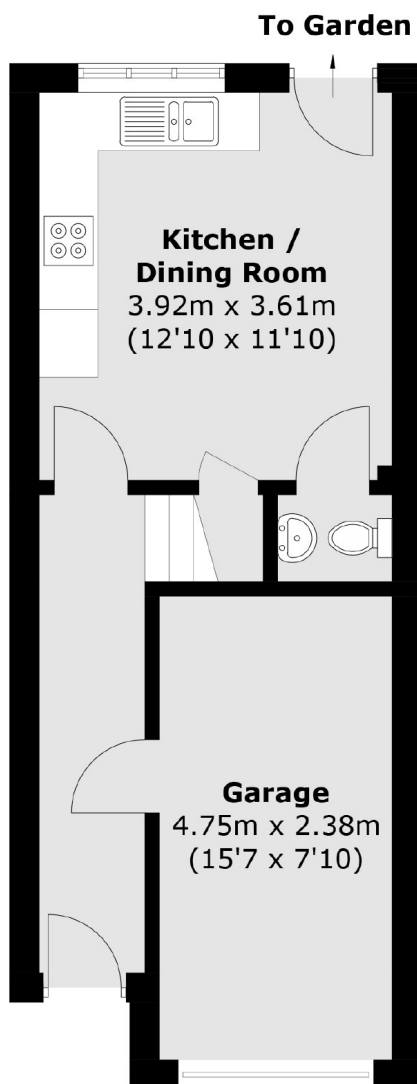
A sizeable three bedroom home in the heart of Tooting in a gated community with a garage, three bedrooms, a large eat-in kitchen, south facing garden and reception room.

Castle Mews is a close knit gated community of homes in excellent proximity to Central Tooting with Tooting Market and it's shops, bars and boutiques on the doorstep. The excellent commute prospects can be found via Tooting Broadway Underground Station which is minutes walk away.

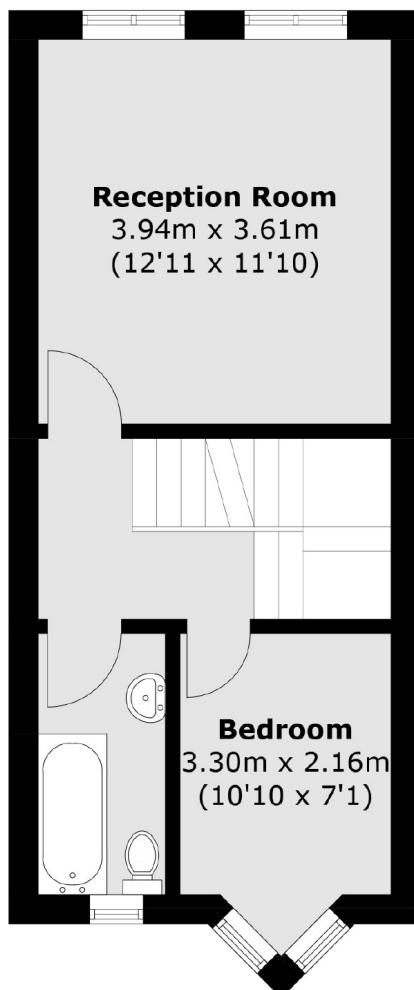
Features

- Three Bedrooms
- Garage
- South Facing Garden
- Chain Free
- Gated Community
- Central Location

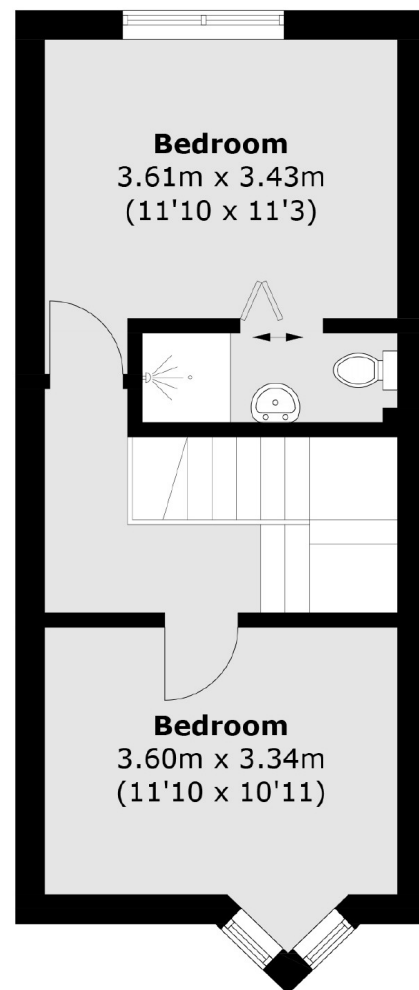
Castle Mews, London, SW17



Ground Floor



First Floor



Second Floor

Total area (approx.): 98.9 sq. m (1,064.5 sq. ft)
(Including Garage)