



Ashbourne Road, CR4

£375,000

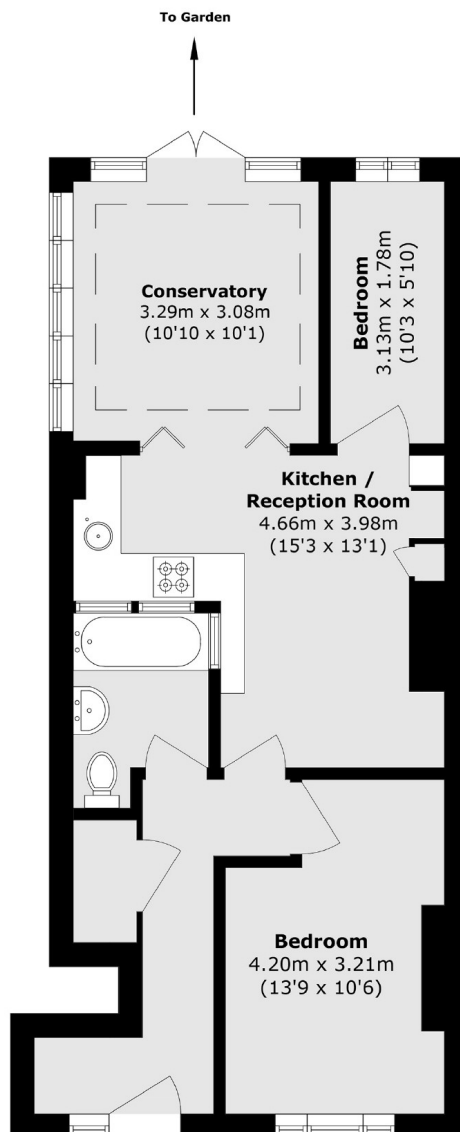
A sizeable two double bedroom maisonette with great proportions and a private garden offered to the market chain free. The property opens onto two generous bedrooms, a three piece bathroom and a large south facing garden.

Situated on a quiet residential street conveniently located within easy reach of both Tooting station & Tooting Broadway underground, close to the green open spaces of Figges Marsh and the vast array of shops, bars and restaurants of Tooting nearby - including the popular Tooting Market.

Features

- Two Double Bedrooms
- Own Front Door
- Private Garden
- Chain Free
- Large Kitchen
- Desirable Location

Ashbourne Road, Mitcham, CR4



Total area (approx.): 54.5 sq. m (586.6 sq. ft)

Dexters

Tooting
48 Tooting High Street
London
SW17 0RG
Sales
020 8545 8582

Energy Rating: D. We aim to make our particulars both accurate and reliable. However they are not guaranteed; nor do they form part of an offer or contract. If you require clarification on any points then please contact us, especially if you're traveling some distance to view. Please note that appliances and heating systems have not been tested and therefore no warranties can be given as to their good working order.

 **RICS** | Regulated
Estate Agent
and Letting Agent

[dexters.co.uk](https://www.dexters.co.uk)