



## Massingberd Way, SW17

### £375,000

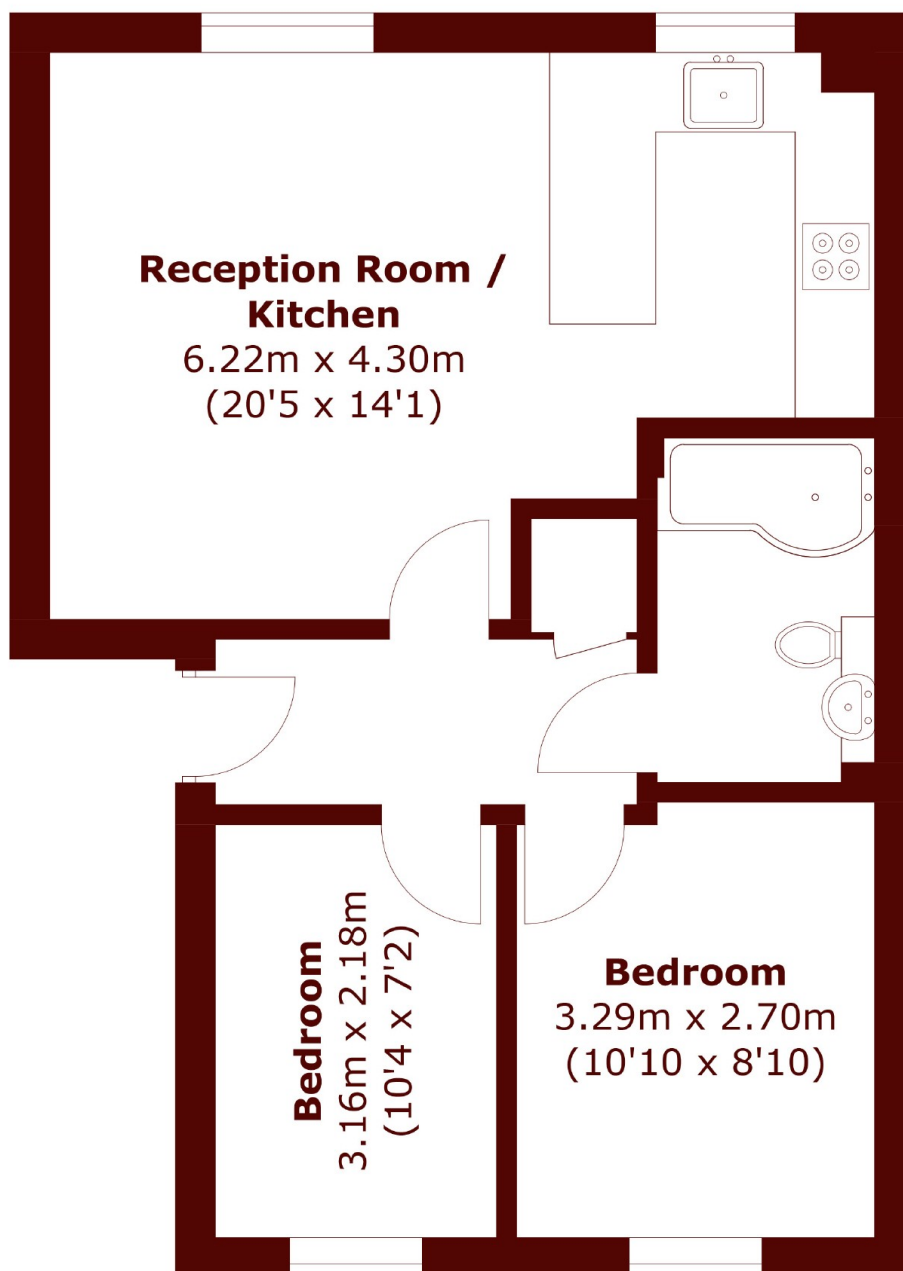
A stunning and superbly maintained two double bedroom ground floor apartment positioned in Heritage Park with a stunning open-plan kitchen/reception room with a fitted kitchen, two double bedrooms, a stylish three piece family bathroom and off-street parking spaces.

Massingberd Way represents a close knit community of exclusive homes nestled away by Tooting Bec Common, with the vast amenities of Balham and Tooting town centres only a short walk away. Excellent transport links can be found via Tooting Bec Underground station.

### Features

- Two Double Bedroom
- Ground Floor
- Open-Plan Kitchen
- Off-Street Parking
- Heritage Park
- Desirable Location

# Massingberd Way, London, SW17



Total area (approx.): 49.9 sq. m (537.1 sq. ft)