



Longley Road, SW17

£400,000

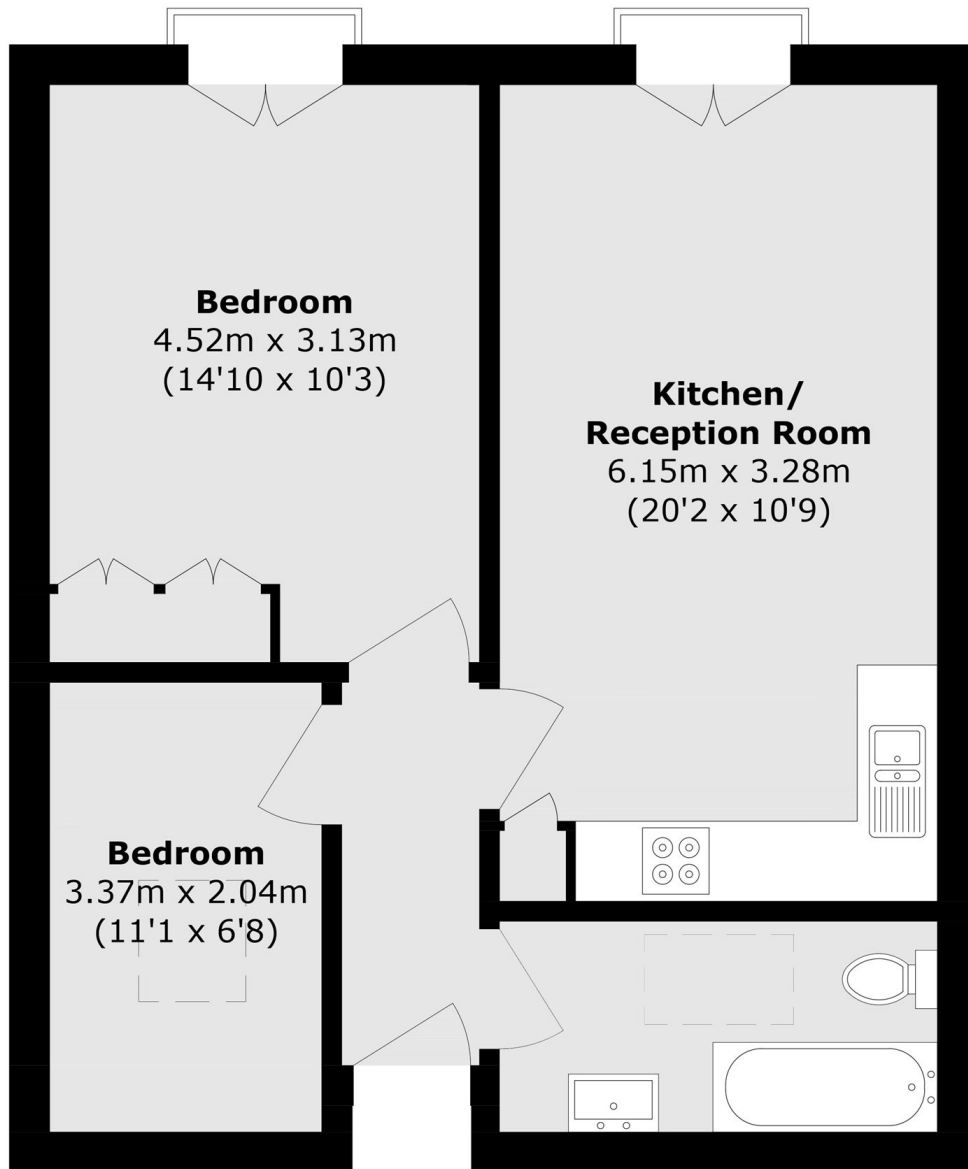
A charming and beautifully presented two double bedroom second floor apartment situated in this handsome double fronted Victorian building. The property is made up of an open plan kitchen/reception room, two double bedrooms, a three piece family bathroom and a large garden.

Longley Road is a conveniently located residential street with excellent access to the many shops, bars and restaurants of central Tooting, with easy access to Tooting Railway and Tooting Broadway Underground stations.

Features

- Two Double Bedrooms
- Family Bathroom
- Large Garden
- Open-Plan Kitchen/ Reception Room
- Desirable Location
- Close to Local Amenities

Longley Road, London, SW17



Total area (approx.): 51.5 sq. m (554.3 sq. ft)