



Boundary Road, SW19

£465,000

A newly renovated two bedroom apartment set over the first and second floor of this charming building includes a spacious open plan kitchen/reception room, a stylish three piece bathroom and en-suite of the main bedroom.

Boundary Road is nestled away in the heart of Colliers Wood with the many shops, boutiques and cafes on the doorstep. The wide green open spaces of Wandle Park and excellent transport links of Colliers Wood Underground stations are within walking distance.

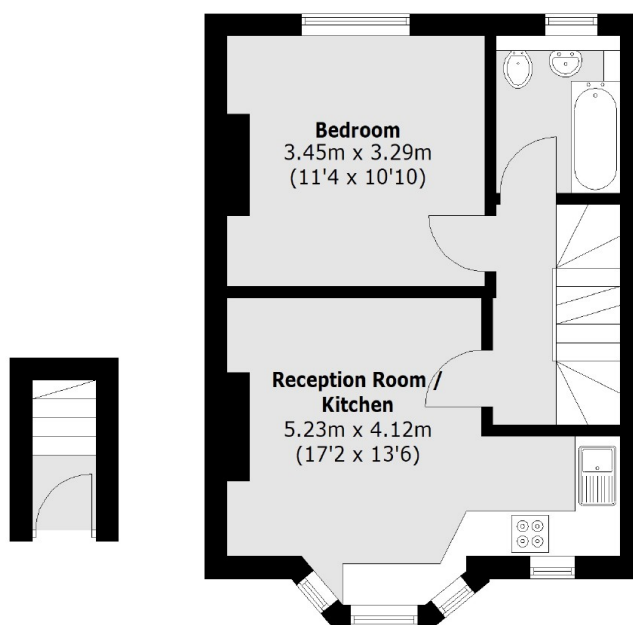
Features

- Two Double Bedrooms
- Two Bathrooms
- Open Plan Kitchen/Reception Room
- Newly Refurbished
- Great Transport Links
- Wandle Park Closeby

Boundary Road, London, SW19



Second Floor



Ground Floor

First Floor

Total area (approx.): 62.4 sq. m (671.6 sq. ft)
(Excluding Eaves)

Dexters

Tooting
48 Tooting High Street
London
SW17 0RG
Sales
020 8545 8582

Energy Rating: . We aim to make our particulars both accurate and reliable. However they are not guaranteed; nor do they form part of an offer or contract. If you require clarification on any points then please contact us, especially if you're traveling some distance to view. Please note that appliances and heating systems have not been tested and therefore no warranties can be given as to their good working order.

 **RICS** | Regulated
Estate Agent
and Letting Agent

[dexters.co.uk](https://www.dexters.co.uk)