



Cromer Road, SW17

£750,000

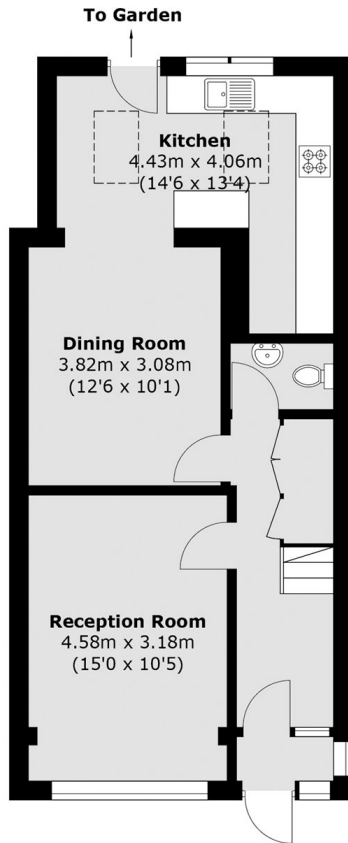
A truly unique and characterful four bedroom family home located within the ABC roads with a generous footprint spanning over 1300sqft. Opening onto a spacious front reception room, the property benefits from open plan kitchen/dining room, a large garden, four bedrooms, two bathrooms and further scope for extending (STPP).

Cromer Road is a quiet residential tree-lined road located in the ABC roads with excellent proximity to the many shops, bars and restaurants of central Tooting and Furzedown Village, with the convenient transport links of Tooting overground and Tooting Broadway tube and outstanding schools within walking distance.

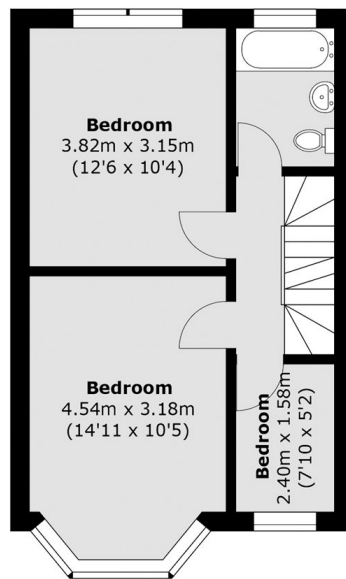
Features

- Four Bedrooms
- Two Bathrooms
- Large Private Garden
- Potential to Extend (STPP)
- ABC Roads
- Close To Transport

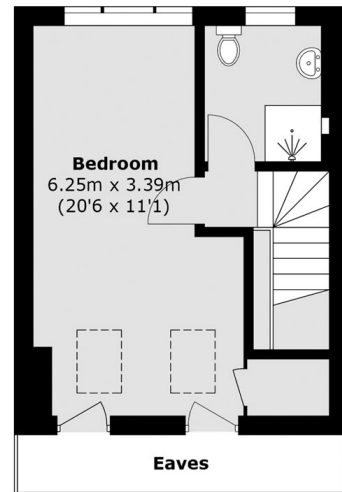
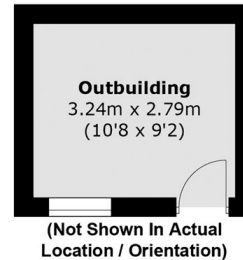
Cromer Road, London, SW17



Ground Floor



First Floor



Second Floor

Total area (approx.): 123.3 sq. m (1,327.1 sq. ft)
Outbuilding: 9.2 sq. m (99.0 sq. ft)
(Excluding Eaves)