



Woodland Way, CR4

£625,000

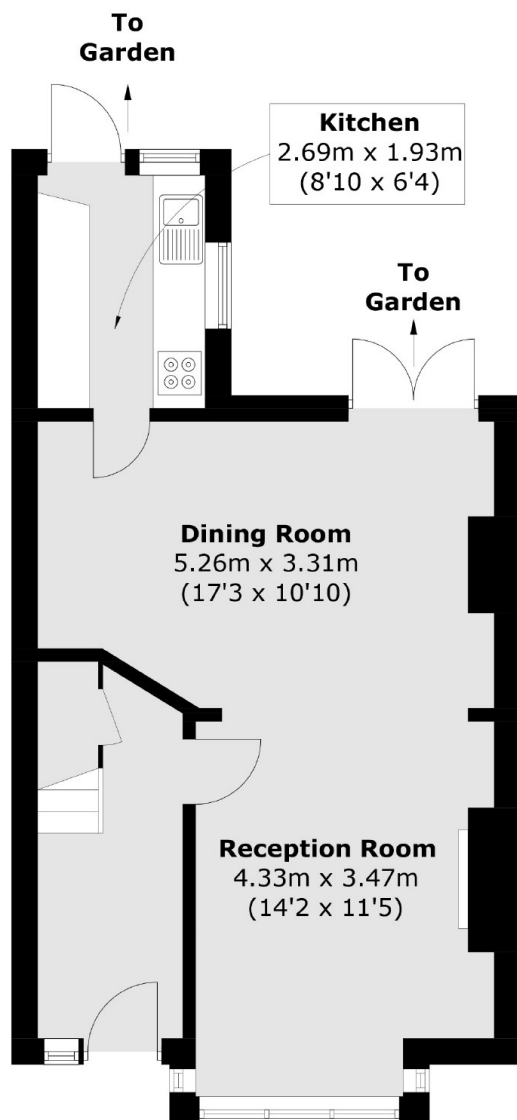
A charming mid terrace freehold home with superb character throughout furnished with a double reception room and spacious kitchen over the ground floor. The property benefits from three bedrooms and a family bathroom over the first floor with a generous rear garden with great scope for extending (STPP).

Woodland Way is a quiet residential road conveniently located for the many shops, bars and restaurants of central Tooting with the excellent transport links of Tooting Railway within walking distance and Tooting Broadway Underground stations also nearby.

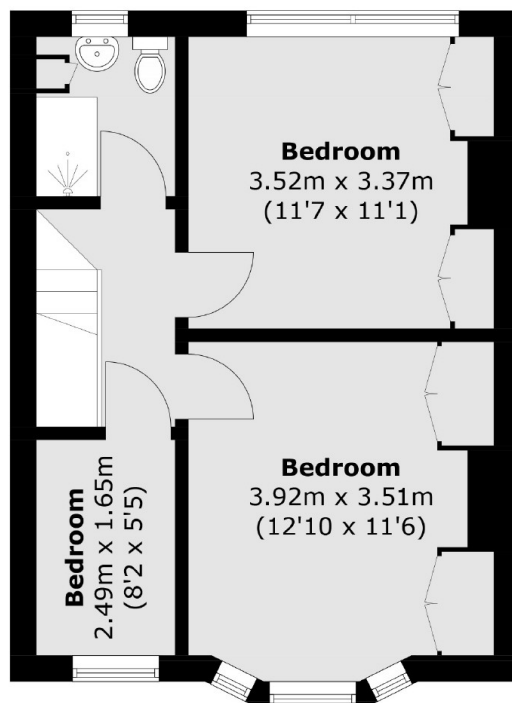
Features

- Three Bedrooms
- Generous Garden
- Double Reception Room
- Period Features
- Potential to Extend (STPP)
- Quiet Location

Woodland Way, Mitcham, CR4



Ground Floor



First Floor

Total area (approx.): 83.2 sq. m (895.5 sq. ft)

Dexters

Tooting
48 Tooting High Street
London
SW17 0RG
Sales
020 8545 8582

Energy Rating: . We aim to make our particulars both accurate and reliable. However they are not guaranteed; nor do they form part of an offer or contract. If you require clarification on any points then please contact us, especially if you're traveling some distance to view. Please note that appliances and heating systems have not been tested and therefore no warranties can be given as to their good working order.

 **RICS** | Regulated
Estate Agent
and Letting Agent

[dexters.co.uk](https://www.dexters.co.uk)